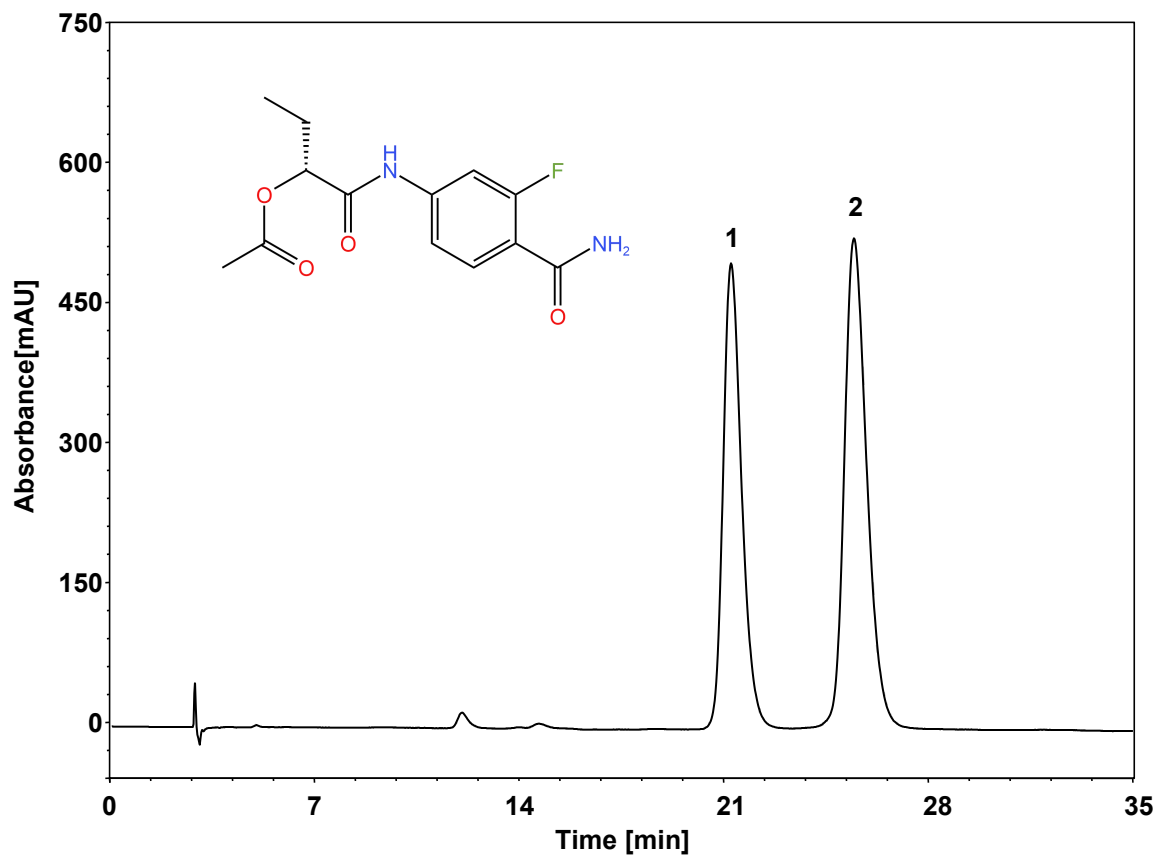


R-1-((4-氨基-3-氟苯基)氨基)-1-氧代丁基-2-乙酸酯



Column: ChiralCore Cel-X, 5 μ m
Dimension: 4.6 \times 250 mm
Mobile Phase: 85/15/0.1 v/v 正己烷/乙醇/二乙胺
Flow Rate: 1.0 mL/min
Temperature: RT
Injection: 5 μ L
Detection: UV 270 nm
Sample: R-1-((4-氨基-3-氟苯基)氨基)-1-氧代丁基-2-乙酸酯 (0.5 mg/mL, 乙醇溶解)

组分	保留时间 (min)	理论塔板数 (USP)	拖尾因子 (USP)	分离度 (USP)
1	21.235	5247	1.37	/
2	25.453	5171	1.18	3.26