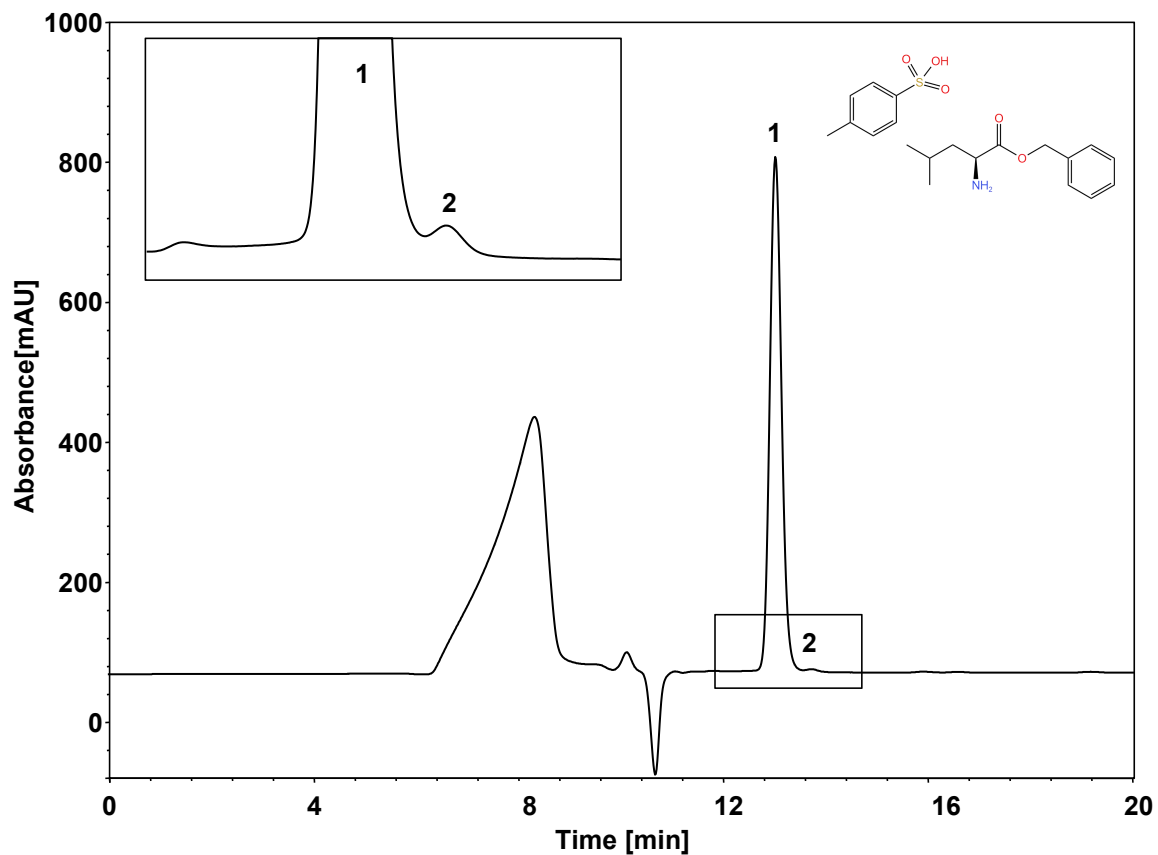


亮氨酸苄酯对甲苯磺酸盐



Column: ChiralCore Amy-D, 5 μm
Dimension: 4.6 \times 250 mm
Mobile Phase: 0.1% 二乙胺异丙醇
Flow Rate: 0.3 mL/min
Temperature: 15 $^{\circ}\text{C}$
Injection: 5 μL
Detection: UV 215 nm
Instrument: Agilent Infinity II 1260
Sample: H-Leu-Obzl (H-Leu-Obzl:1 mg/mL, D-Leu-Obzl:0.5 mg/mL)
Peaks:
1. H-Leu-Obzl
2. D-Leu-Obzl

组分	保留时间 (min)	理论塔板数 (USP)	拖尾因子 (USP)	分离度 (USP)
H-Leu-Obzl	13.009	15625	1.12	/
D-Leu-Obzl	13.712	10420	1.34	1.47