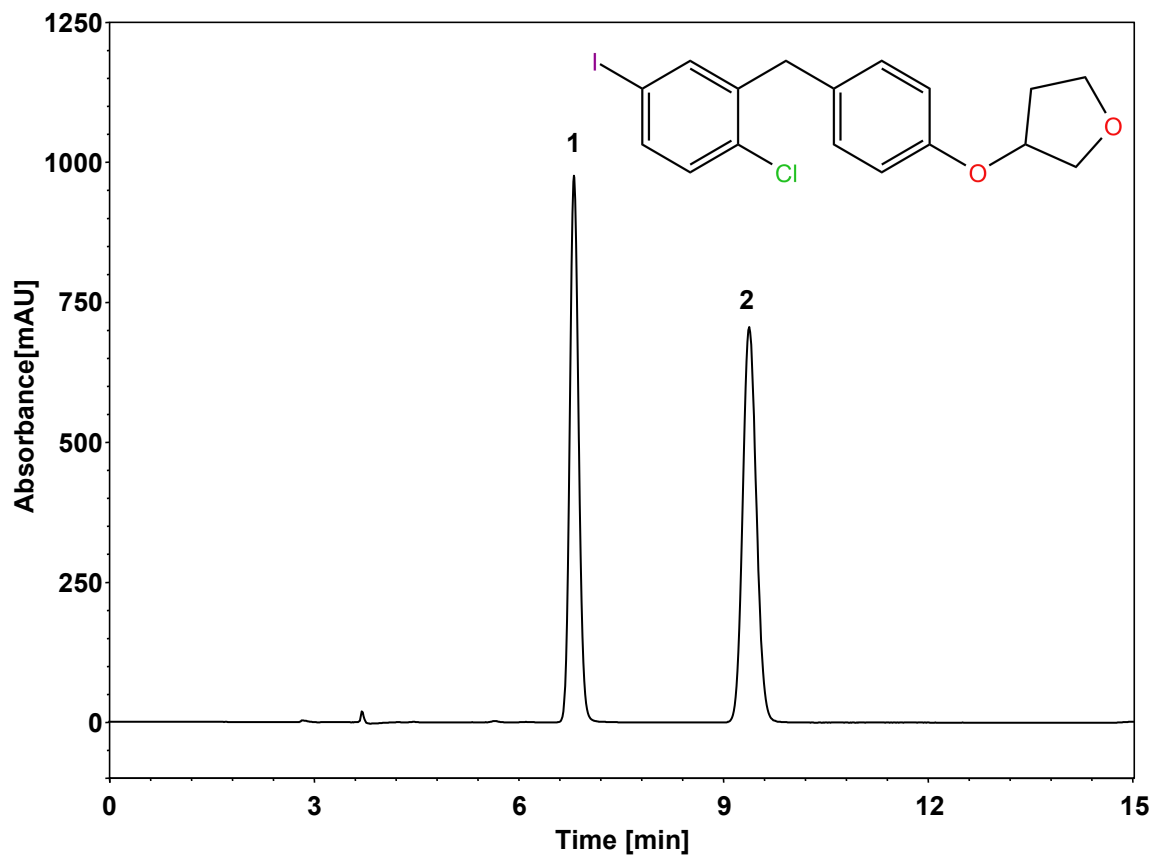


# 手性样品



Column: ChiralCore Amy-S, 5  $\mu\text{m}$   
Dimension: 4.6  $\times$  250 mm  
Mobile Phase: 85/15 v/v 正己烷/异丙醇  
Flow Rate: 1.0 mL/min  
Temperature: RT  
Injection: 5  $\mu\text{L}$   
Detection: UV 234 nm

组分	保留时间 (min)	理论塔板数 (USP)	拖尾因子 (USP)	分离度 (USP)
1	6.806	12593	1.24	/
2	9.373	10199	1.16	8.36