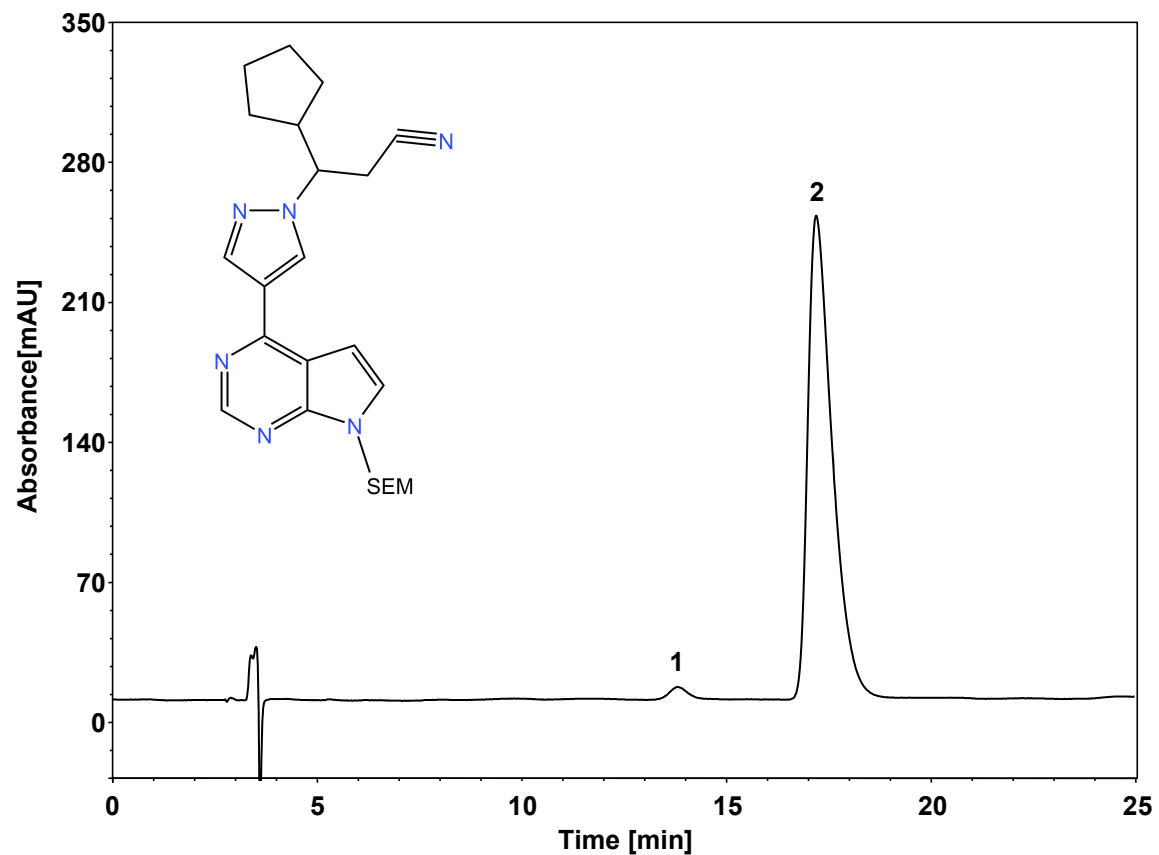


# 手性样品



Column: ChiralCore Amy-Y, 5  $\mu\text{m}$   
Dimension: 4.6  $\times$  250 mm  
Mobile Phase: 80/20 v/v 正己烷/异丙醇  
Flow Rate: 1.0 mL/min  
Temperature: RT  
Injection: 10  $\mu\text{L}$   
Detection: UV 254 nm

| 组分 | 保留时间 (min) | 理论塔板数 (USP) | 拖尾因子 (USP) | 分离度 (USP) |
|----|------------|-------------|------------|-----------|
| 1  | 13.825     | 3092        | 1.04       | /         |
| 2  | 17.217     | 3808        | 2.08       | 3.21      |