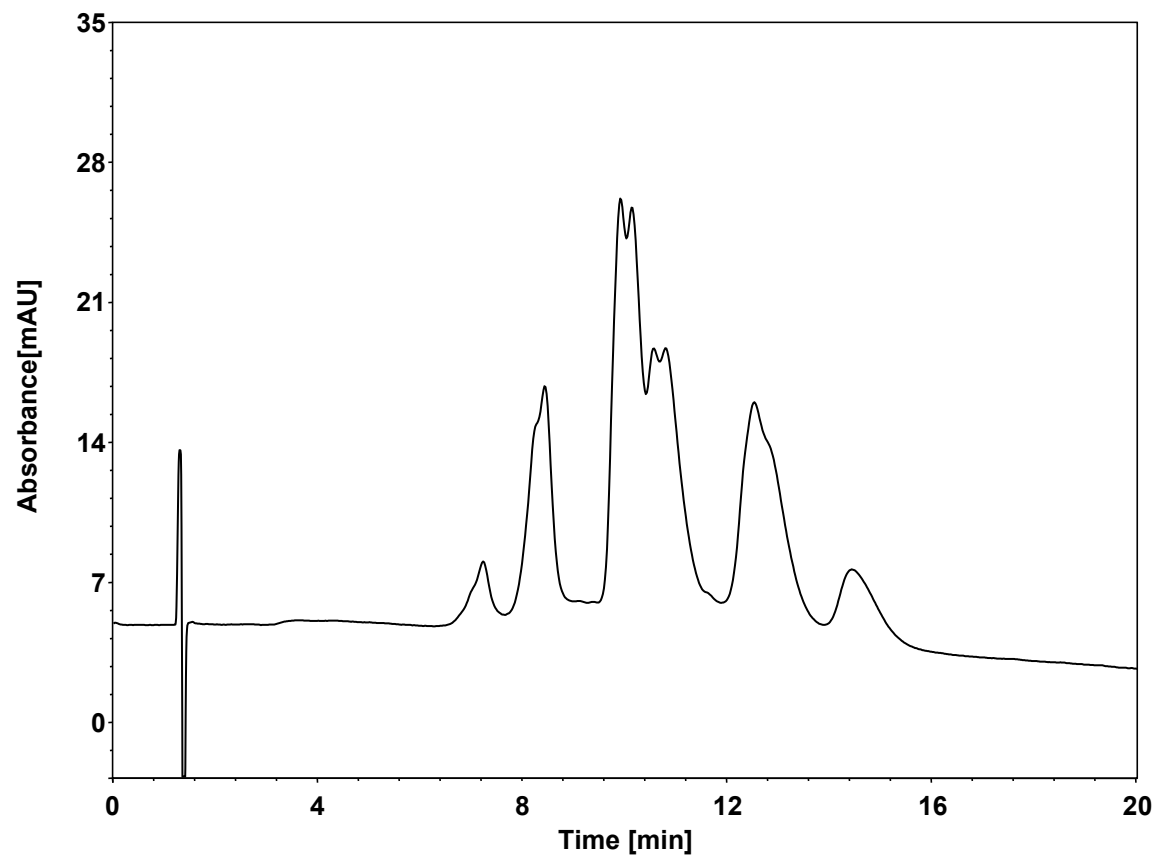


ADC



Column: BioCore HIC-Phenyl, 5 μ m
Dimension: 4.6 \times 100 mm
Mobile Phase: A) 1 M $(\text{NH}_4)_2\text{SO}_4$ in 100 mM phosphate buffer, pH7.0
B) 20/80 v/v Isopropanol/100 mM phosphate buffer, pH7.0

Gradient:

t (min)	%A	%B
0	100	0
1	100	0
20	20	80
25	20	80
26	100	0
36	100	0

Flow Rate: 1 mL/min
Temperature: 30 $^\circ\text{C}$
Injection: 15 μL
Detection: UV 280 nm
Instrument: Agilent Infinity II 1260 (Bio)
Sample: ADC (2 mg/mL)