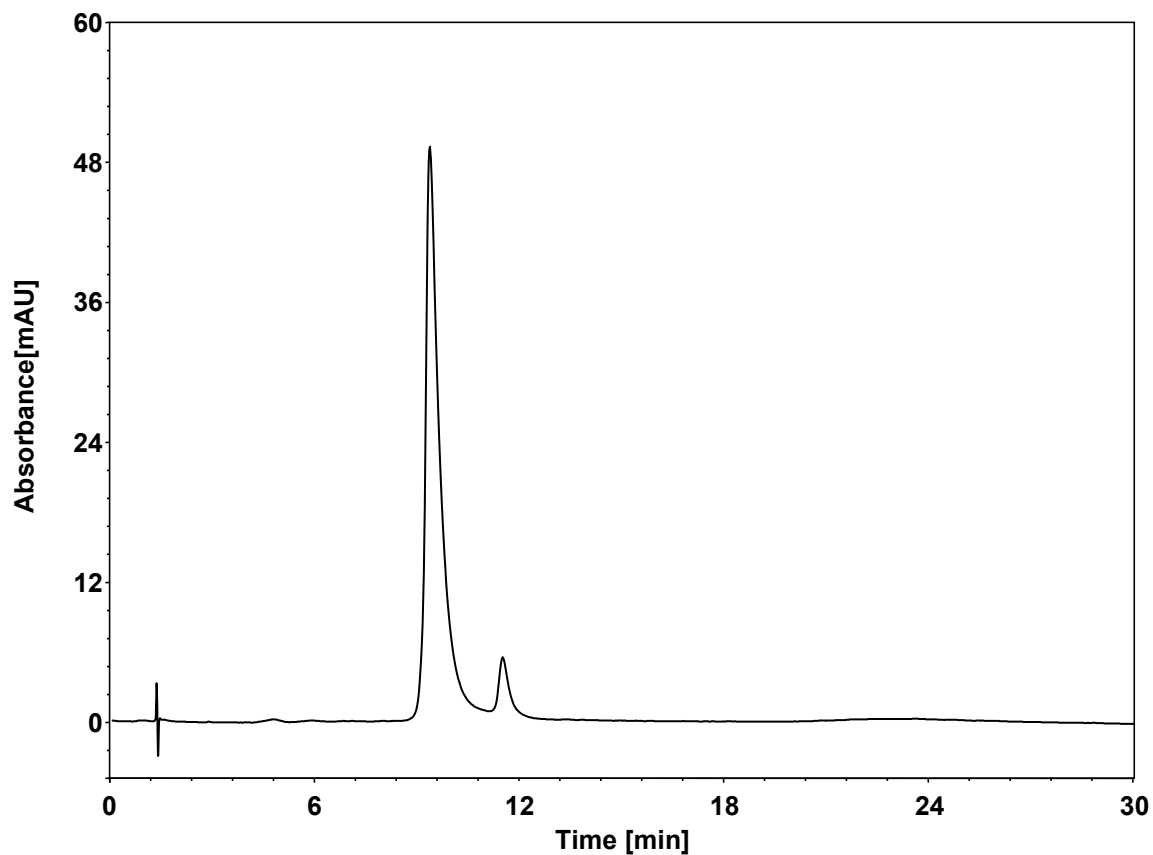


单抗



Column: BioCore HIC-Butyl, 5 μ m
Dimension: 4.6 \times 100 mm
Mobile Phase: A) 1.3 M NaCl in 25 mM phosphate buffer, pH7.0
B) 25 mM phosphate buffer, pH7.0

Gradient:	t (min)	%A	%B
	0	100	0
	2	100	0
	32	0	100
	35	0	100
	36	100	0
	45	100	0

Flow Rate: 1 mL/min
Temperature: 40 $^{\circ}$ C
Injection: 2 μ L
Detection: UV 280 nm
Instrument: Agilent Infinity II 1260 (Bio)
Sample: 抗体 (10.7 mg/mL)