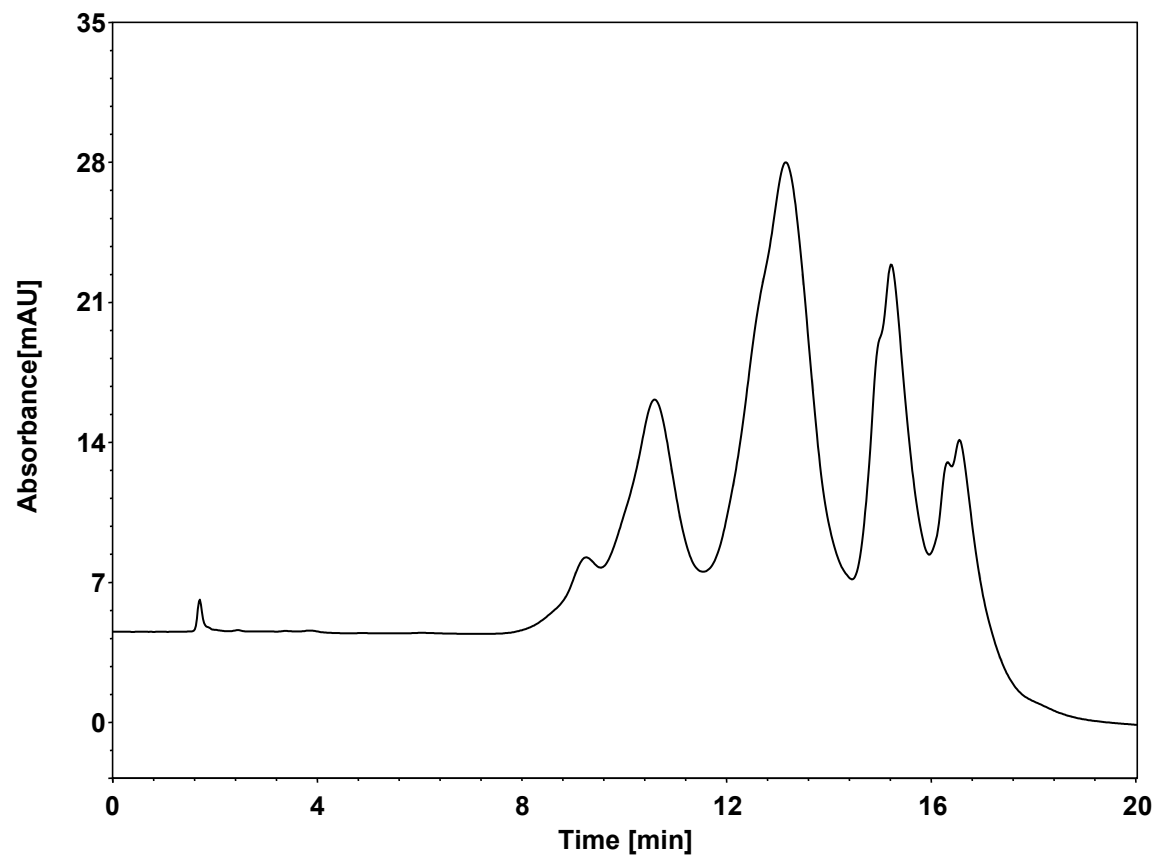


# ADC



Column: BioCore HIC-Phenyl, 5  $\mu$ m  
Dimension: 4.6  $\times$  100 mm  
Mobile Phase: A) 5/95 v/v Isopropanol/1.0 M  $(\text{NH}_4)_2\text{SO}_4$  in 100 mM phosphate buffer, pH7.0  
B) 5/95 v/v Isopropanol/100 mM phosphate buffer, pH7.0

Gradient:

t (min)	%A	%B
0	70	30
0.5	70	30
10	60	40
15	0	100
20	0	100
21	70	30
30	70	30

Flow Rate: 0.8 mL/min  
Temperature: 40  $^\circ\text{C}$   
Injection: 5  $\mu\text{L}$   
Detection: UV 280 nm  
Instrument: Agilent Infinity II 1290 (Bio)  
Sample: ADC (30 mg/mL)