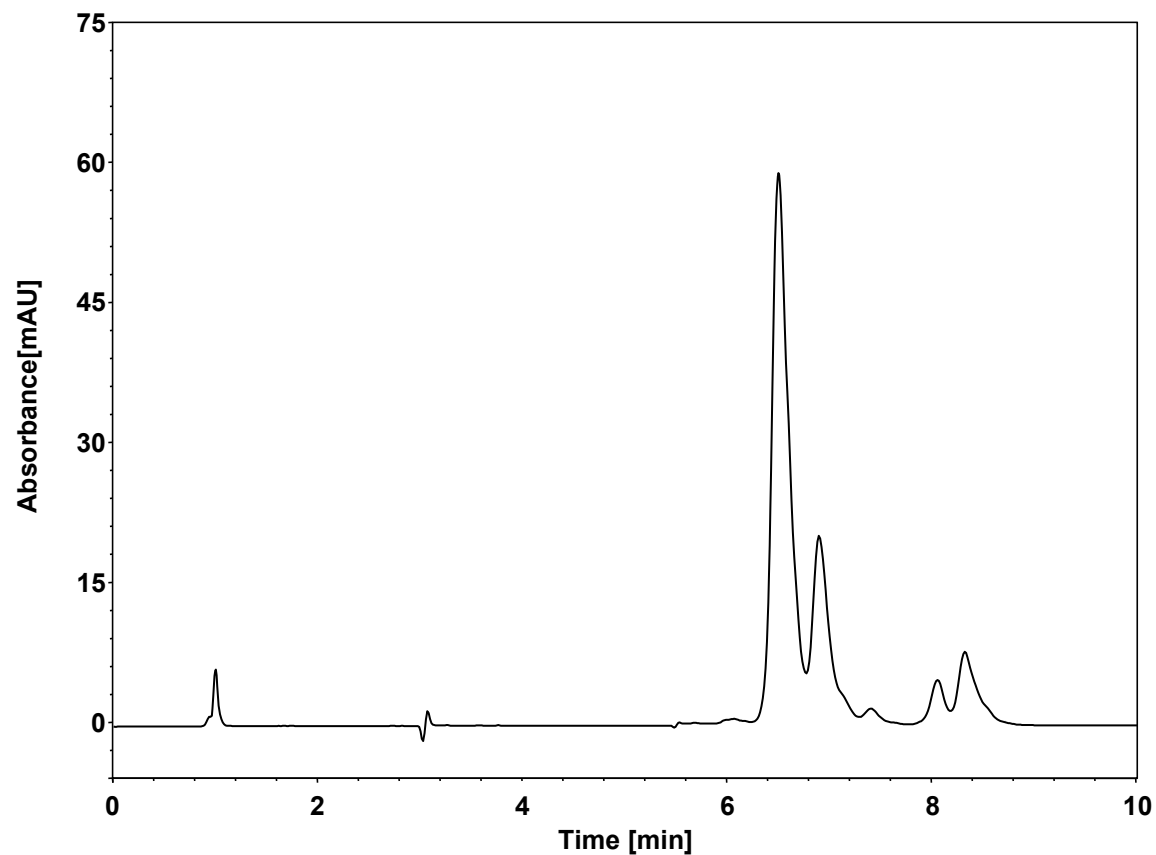


# 透明质酸酶



Column: BioCore SAX, 5  $\mu$ m  
Dimension: 4.6  $\times$  150 mm  
Mobile Phase: A) 20 mM Tris, pH7.5  
B) 300 mM NaClO<sub>4</sub> in 20 mM Tris, pH7.5  
Gradient: 

t (min)	%A	%B
0	100	0
10	40	60
11	0	100
15	0	100
16	100	0
25	100	0

  
Flow Rate: 1 mL/min  
Temperature: 30  $^{\circ}$ C  
Injection: 10  $\mu$ L  
Detection: UV 280 nm  
Instrument: Agilent Infinity II 1260 (Bio)  
Sample: 透明质酸酶 (1 mg/mL MW:51 kD pI:5.5~6.0)