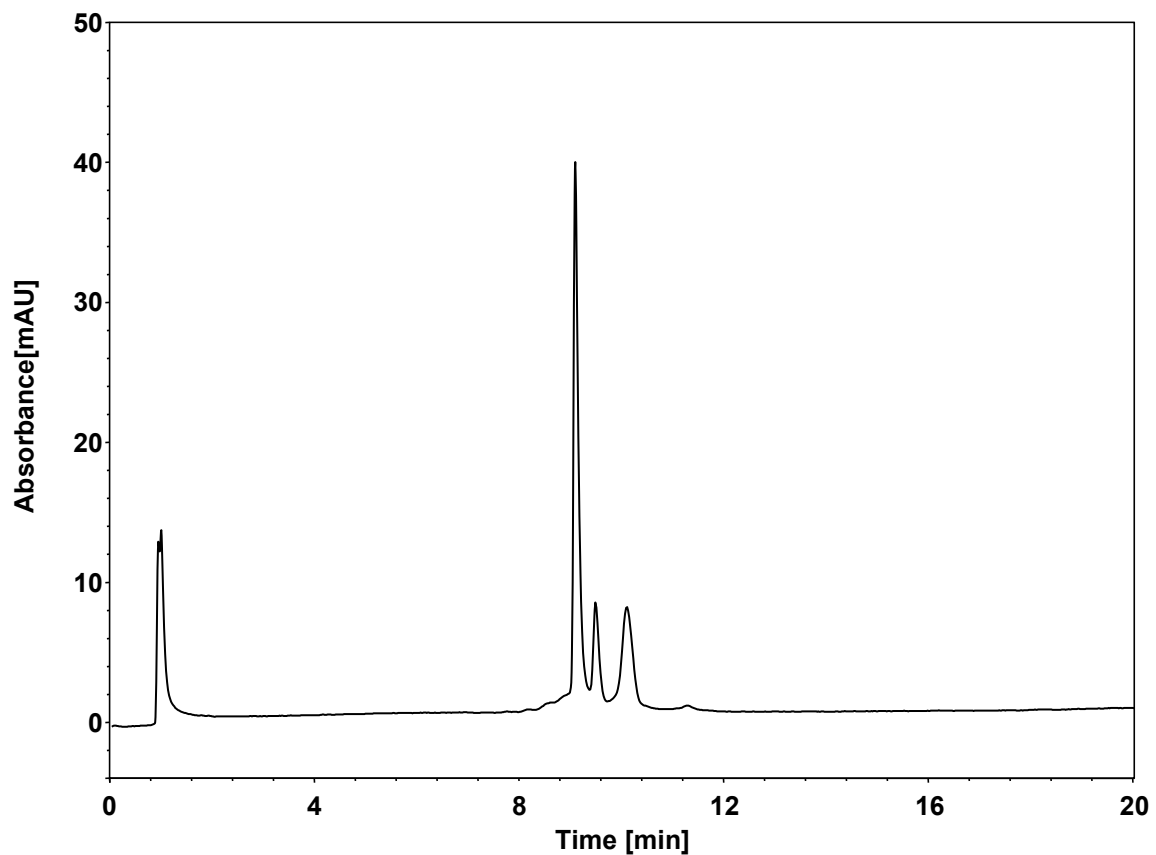


质粒



Column: DNACore NP-Q, 5 μ m
Dimension: 4.6 \times 150 mm
Mobile Phase: A) 20 mM Tris, pH8.5
B) 1 M NaCl in 20 mM Tris, pH8.5
Gradient:

t (min)	%A	%B
0	40	60
20	0	100
25	0	100
26	40	60
35	40	60

Flow Rate: 1.0 mL/min
Temperature: 30 $^{\circ}$ C
Injection: 10 μ L
Detection: UV 260 nm
Instrument: Agilent Infinity II 1260 (Bio)
Sample: 质粒