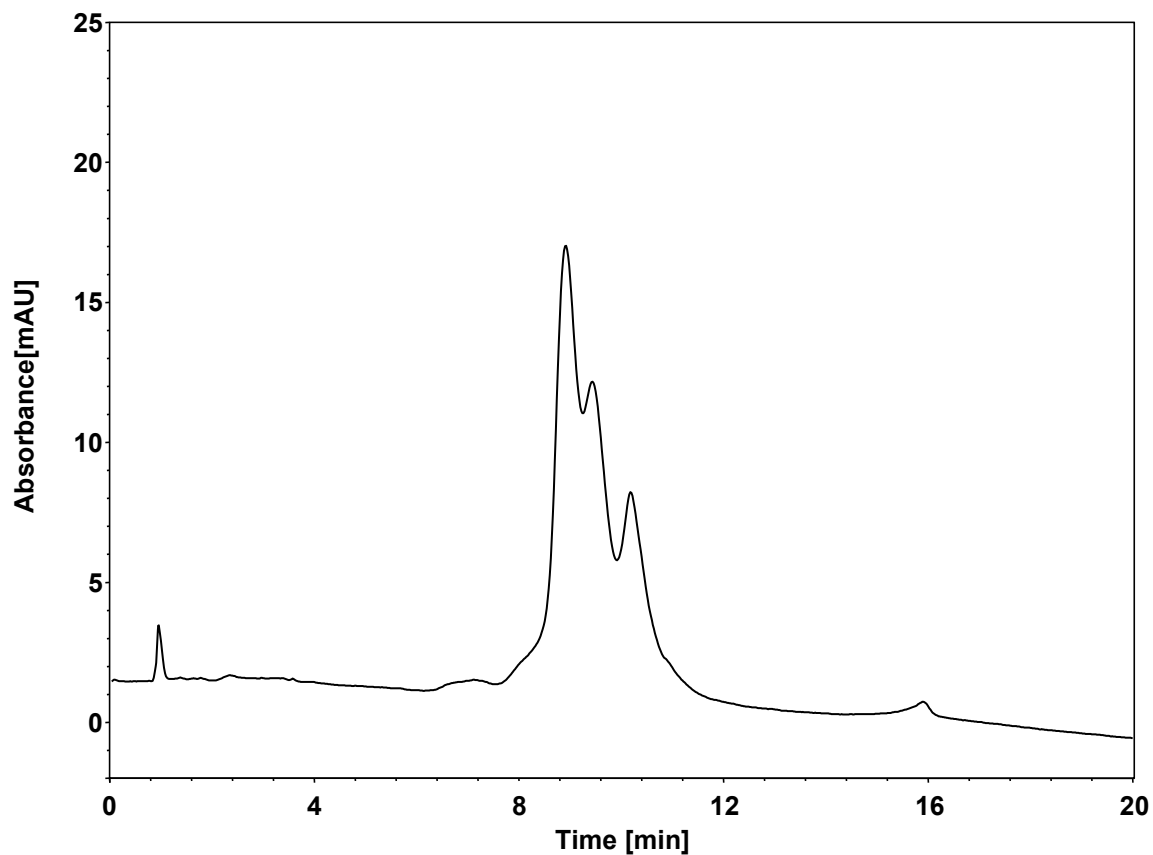


# 蛋白



Column: BioCore SAX, 10  $\mu$ m  
Dimension: 4.6  $\times$  150 mm  
Mobile Phase: A) 20 mM Tris, pH7.5  
B) 1 M NaCl in 20 mM Tris, pH7.5  
Gradient: 

t (min)	%A	%B
0	100	0
20	0	100
25	0	100
26	100	0
35	100	0

  
Flow Rate: 1.0 mL/min  
Temperature: 25  $^{\circ}$ C  
Injection: 10  $\mu$ L  
Detection: UV 280 nm  
Instrument: Agilent Infinity II 1260 (Bio)  
Sample: 蛋白 (1.7 mg/mL pI4~5)