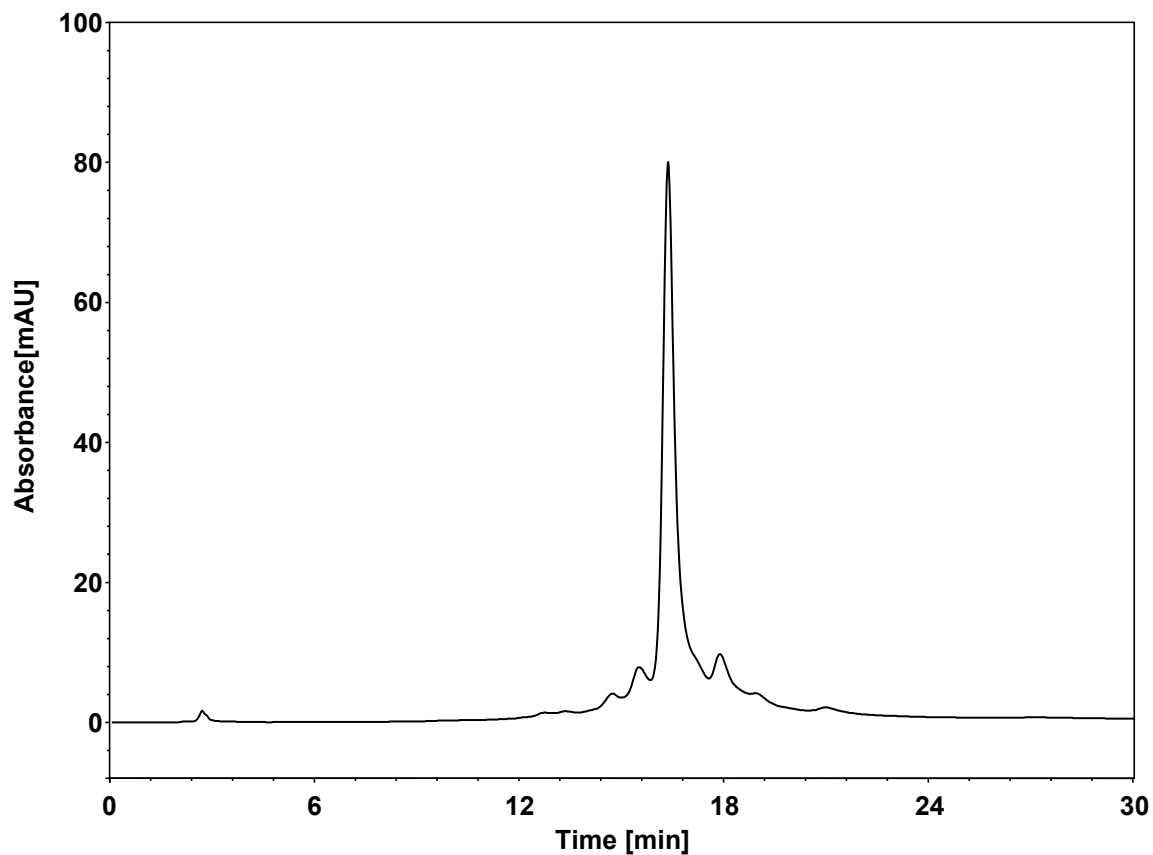


Fc融合蛋白-pH梯度



Column: BioCore WCX, 5 μ m
Dimension: 4.6 \times 250 mm
Mobile Phase: A) pH gradient buffer A, pH5.6
B) pH gradient buffer B, pH10.2

Gradient:	t (min)	%A	%B
	0	50	50
	1	50	50
	30	20	80
	30.1	5	95
	35	5	95
	35.1	50	50
	45	50	50

Flow Rate: 0.6 mL/min
Temperature: 35 $^{\circ}$ C
Injection: 2 μ L
Detection: FLD Ex: 280 nm, Em: 350 nm
Instrument: Agilent Infinity II 1290 (Bio)
Sample: FC 融合蛋白 (1.7 mg/mL pI: 8.2)