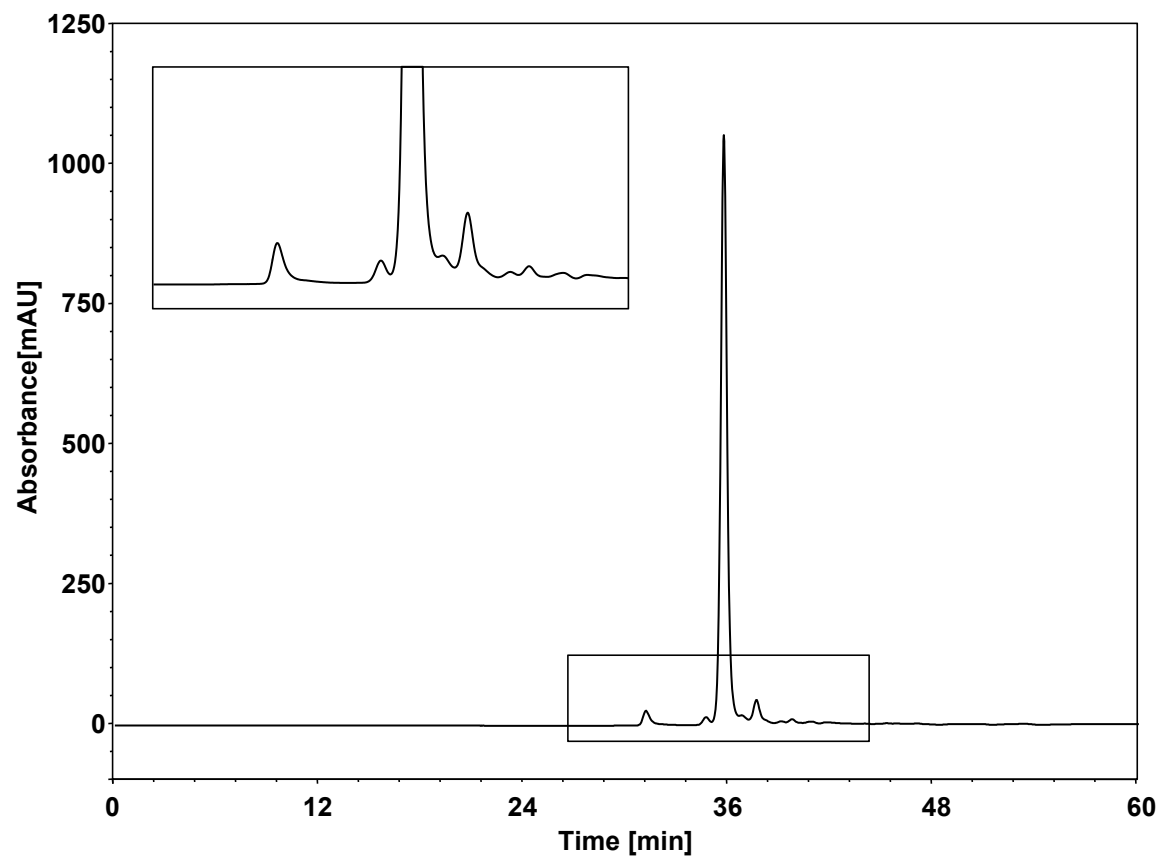


蛋白



Column: BioCore SEC-150, 3 μm
Dimension: 7.8 \times 300 mm
Mobile Phase: 300 mM NaCl in 50 mM phosphate buffer, pH6.8
Flow Rate: 0.2 mL/min
Temperature: 25 $^{\circ}\text{C}$
Injection: 10 μL
Detection: UV 214 nm
Instrument: Agilent Infinity II 1260 (Bio)
Sample: 蛋白 (MW: 23 kD, pI: 4.7 浓度: 1 mg/mL)