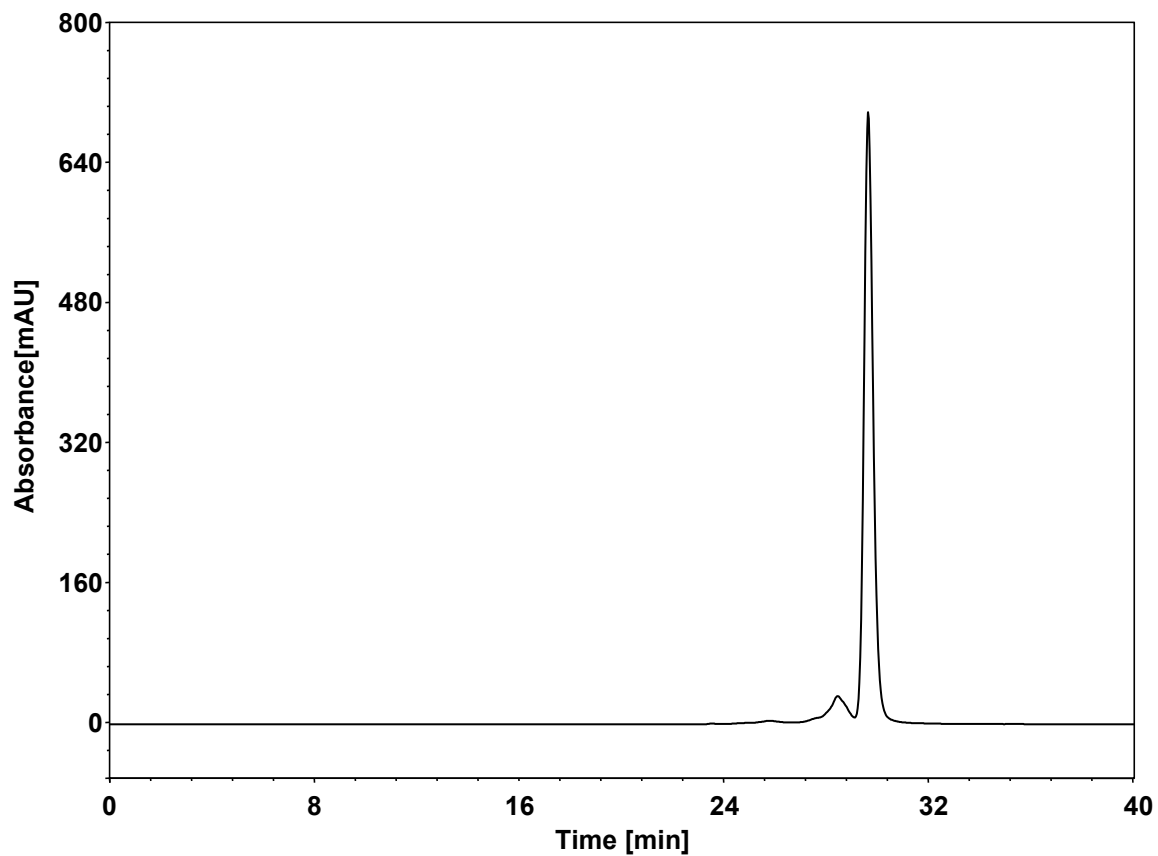


多肽



Column: BioCore SEC-120, 5 μ m
Dimension: 7.8 \times 300 mm
Mobile Phase: 300 mM NaCl in 50 mM phosphate buffer, pH6.8
Flow Rate: 0.4 mL/min
Temperature: 25 $^{\circ}$ C
Injection: 20 μ L
Detection: UV 220 nm
Instrument: Agilent Infinity II 1260 (Bio)
Sample: 多肽 (MW:1500 0.5 mg/mL)