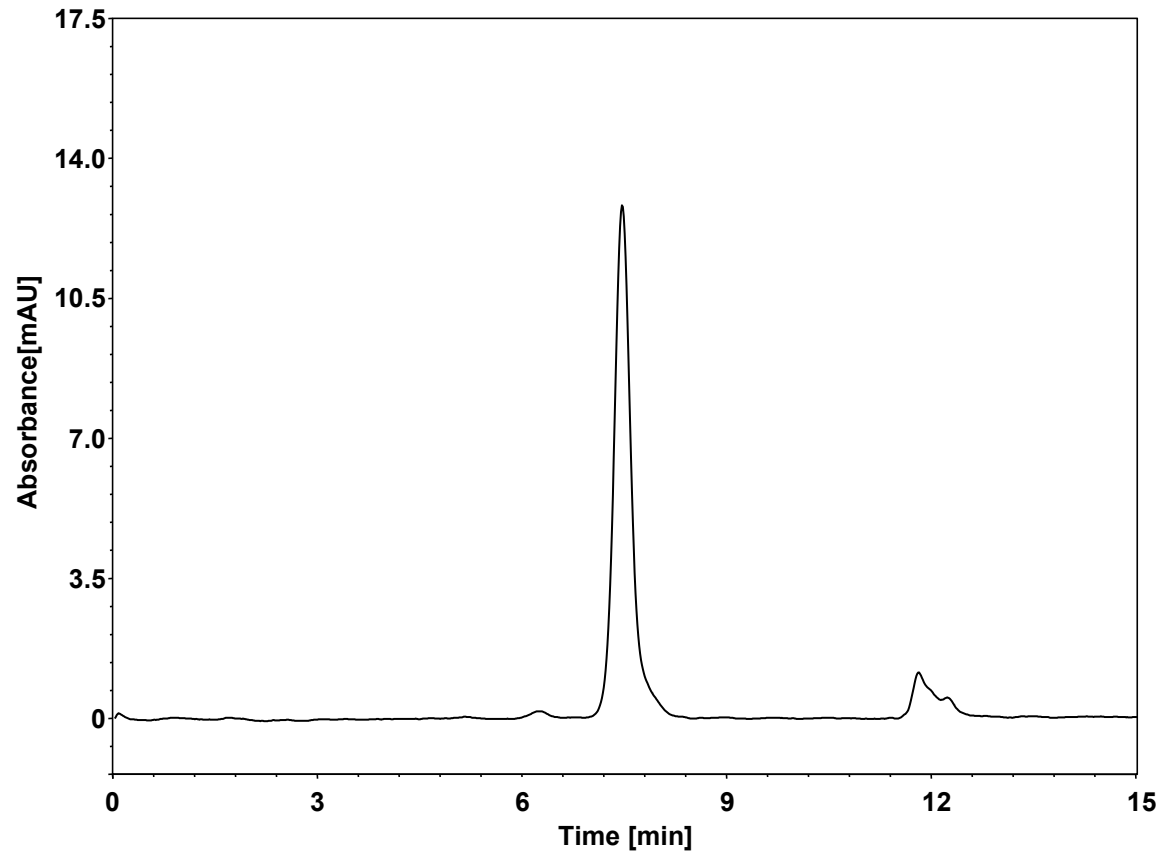


AAV2



Column: BioCore SEC-500, 3 μm
Dimension: 7.8 \times 300 mm
Mobile Phase: 350 mM KCl in 10 mM phosphate buffer, pH6.6
Flow Rate: 1.0 mL/min
Temperature: 25 $^{\circ}\text{C}$
Injection: 10 μL
Detection: UV 260 nm
Instrument: Agilent Infinity II 1260 (Bio)
Sample: AAV2 (20~40 nm)