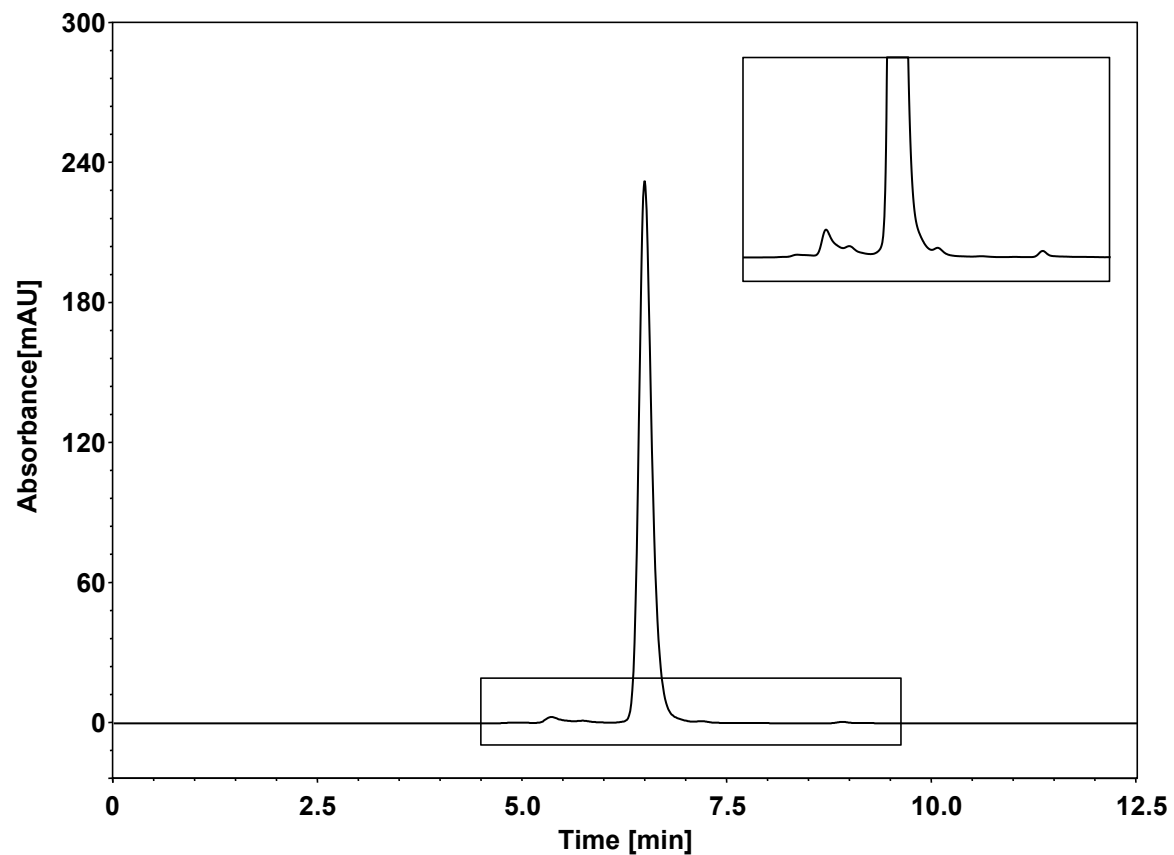


曲妥珠单抗类似物



Column: BioCore SEC-300, 1.8 μm
Dimension: 4.6 \times 150 mm
Mobile Phase: 300 mM NaCl in 50 mM phosphate buffer, pH6.8
Flow Rate: 0.2 mL/min
Temperature: 30 $^{\circ}\text{C}$
Injection: 5 μL
Detection: UV 280 nm
Instrument: Agilent Infinity II 1290 (Bio)
Sample: 曲妥珠单抗类似物