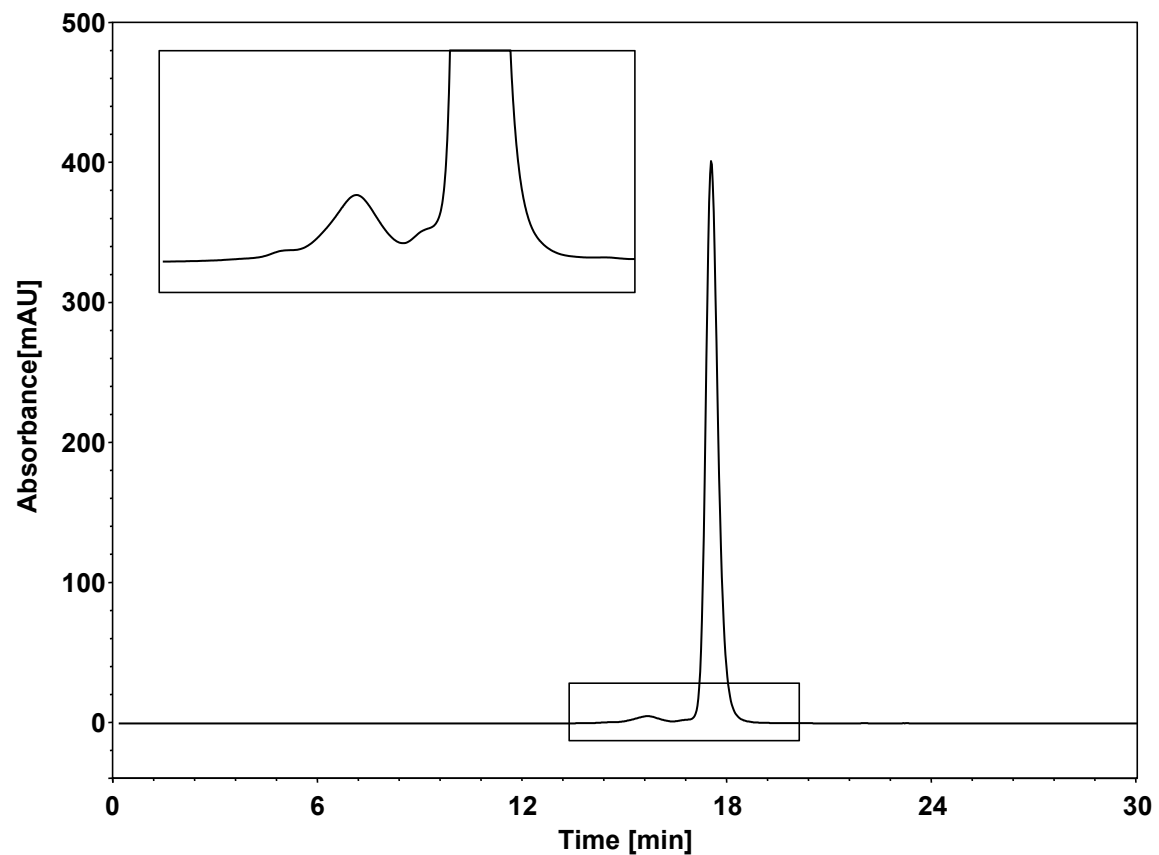


单抗



Column: BioCore SEC-300, 5 μ m
Dimension: 7.8 \times 300 mm
Mobile Phase: 200 mM NaCl in 20 mM phosphate buffer, pH6.8
Flow Rate: 0.5 mL/min
Temperature: 25 $^{\circ}$ C
Injection: 10 μ L
Detection: UV 280 nm
Instrument: Agilent Infinity II 1290 (Bio)
Sample: 单抗 (10 mg/mL, 流动相溶解)