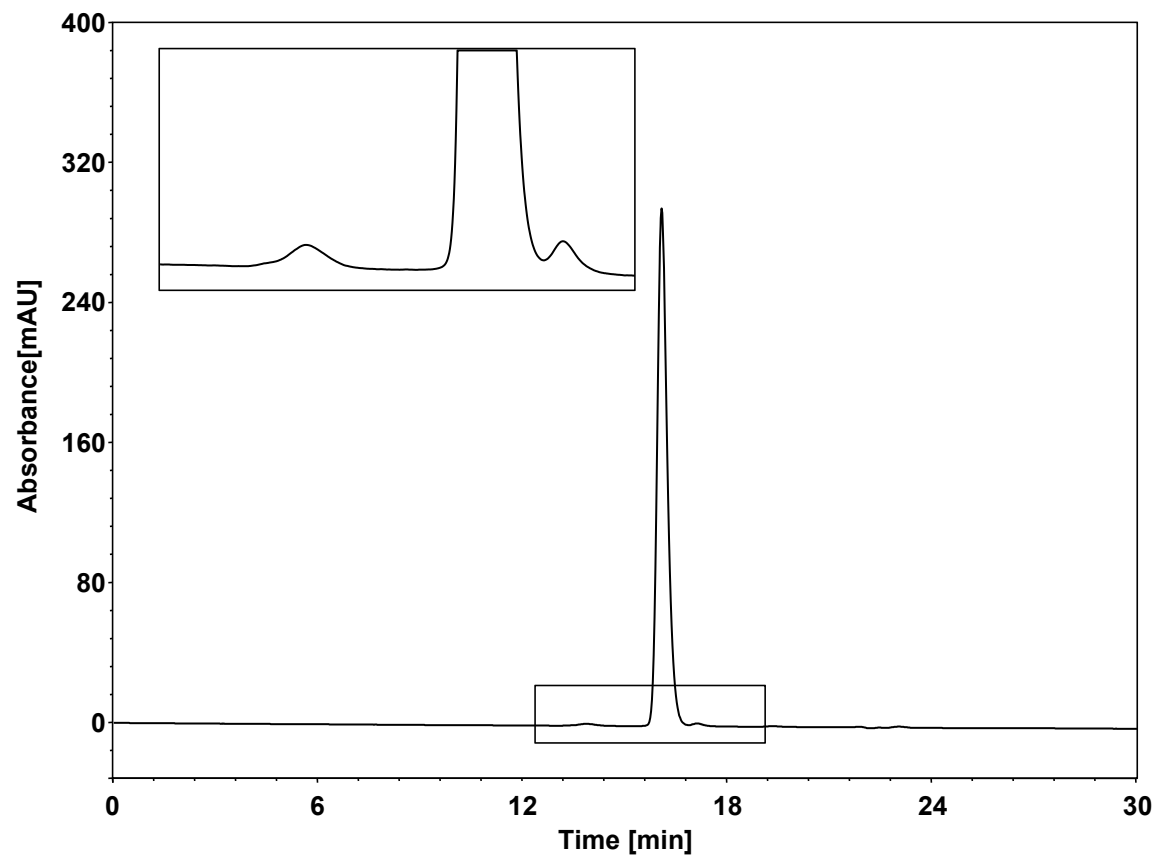


# 抗体



Column: BioCore SEC-300, 3  $\mu$ m  
Dimension: 7.8  $\times$  300 mm  
Mobile Phase: 200 mM NaCl in 50 mM phosphate buffer, pH6.8  
Flow Rate: 0.5 mL/min  
Temperature: 30  $^{\circ}$ C  
Injection: 20  $\mu$ L  
Detection: UV 280 nm  
Instrument: Agilent Infinity II 1260 (Bio)  
Sample: 抗体 (MW 149 kD, 2 mg/mL)