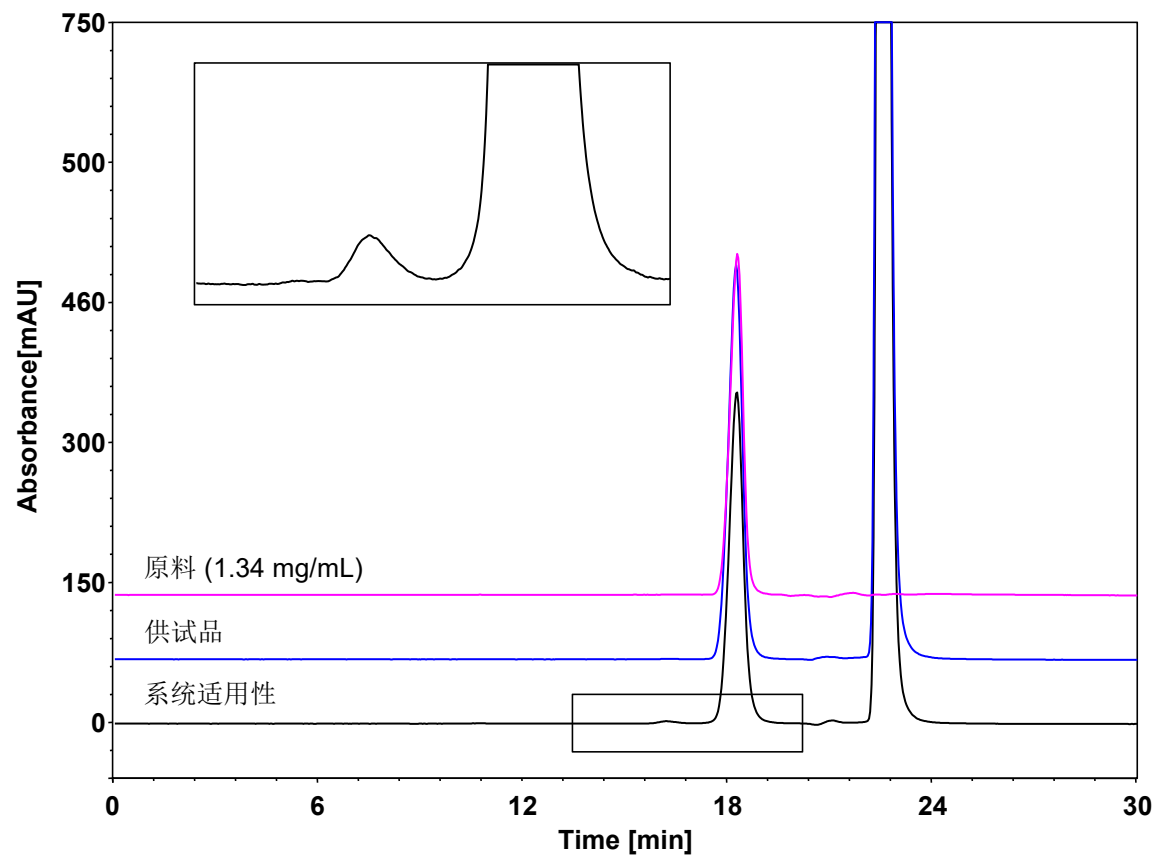


胰岛素类



Column: BioCore SEC-120, 5 μ m
Dimension: 7.8 \times 300 mm
Mobile Phase: 15/15/20 v/v/v 异丙醇/水/冰醋酸
Flow Rate: 0.5 mL/min
Temperature: 30 $^{\circ}$ C
Injection: 40 μ L
Detection: UV 280 nm
Instrument: SHIMADZU LC-2030C
Sample: 胰岛素类

组分	保留时间 (min)	理论塔板数 (USP)	拖尾因子 (USP)	分离度 (USP)
胰岛素类	18.253	8737	0.995	2.499