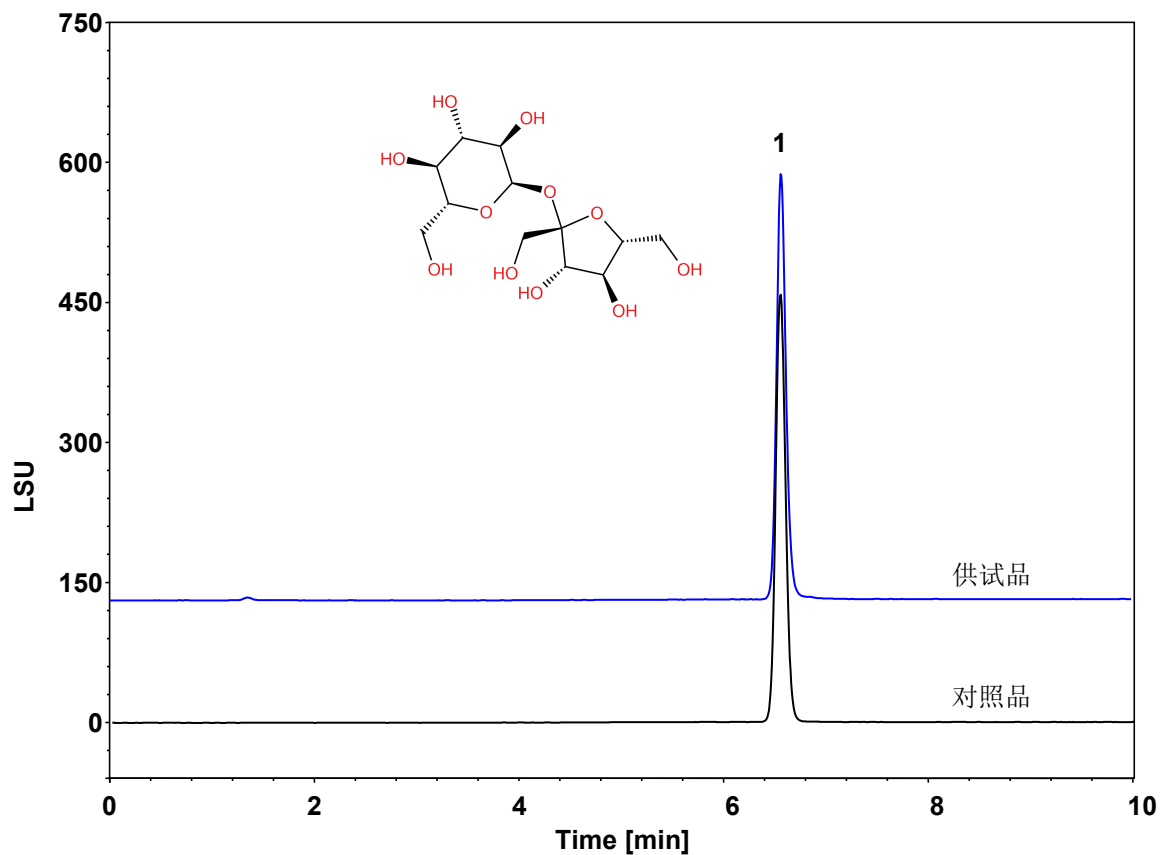


蛋白-蔗糖



Column: ChromCore HILIC-ZW, 3 μ m

Dimension: 3.0 \times 150 mm

Mobile Phase: A) 20 mM 甲酸铵溶液
B) 乙腈

Gradient:	t (min)	%A	%B
	0	20	80
	10	50	50
	11	20	80
	20	20	80

Flow Rate: 0.5 mL/min

Temperature: 45 $^{\circ}$ C

Injection: 2 μ L

Detection: ELSD: Evap: 65 $^{\circ}$ C, Neb: 55 $^{\circ}$ C, Gas: 1.6 SLM

Instrument: Agilent Infinity II 1260

Sample: 蛋白样品 (1.5 mg/mL, 50% 乙腈溶解)

组分	保留时间 (min)	理论塔板数 (USP)	拖尾因子 (USP)	分离度 (USP)
蔗糖	6.579	23787	1.14	/