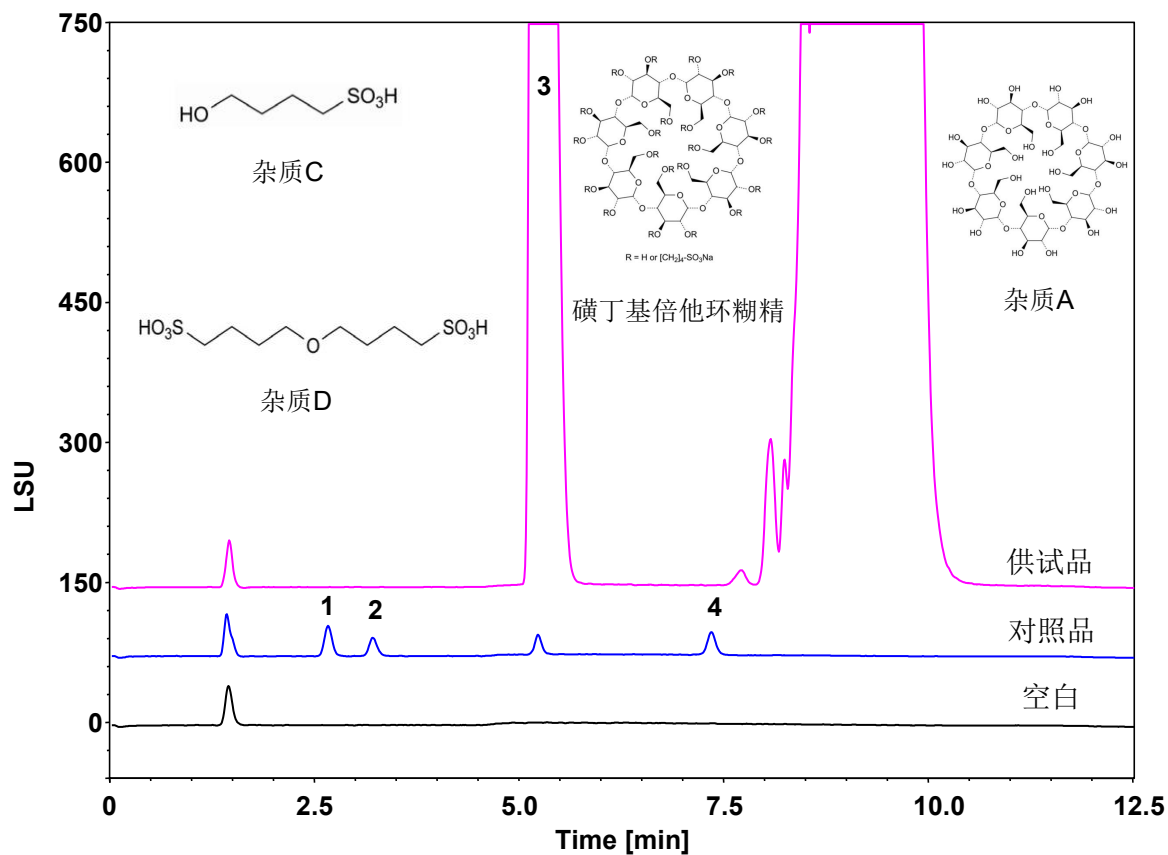


磺丁基倍他环糊精 (EP 11.4)



Column: ChromCore HILIC-ZW, 3 μ m
 Dimension: 3.0 \times 150 mm
 Mobile Phase: A) 5 g/L 甲酸铵溶液, pH4.0
 B) 90/10 v/v 乙腈/ 5 g/L 甲酸铵溶液, pH4.0
 Gradient:

t (min)	%A	%B	Flow Rate (mL/min)
0	23	77	0.5
4.5	23	77	0.5
4.51	23	77	0.7
11	90	10	0.7
12	23	77	0.5
25	23	77	0.5

Temperature: 20 $^{\circ}$ C
 Injection: 5 μ L
 Detection: ELSD:Evap:50 $^{\circ}$ C, Neb:50 $^{\circ}$ C, Gas:1.5 SLM
 Instrument: Agilent Infinity II 1260
 Sample: 磺丁基倍他环糊精
 Peaks: 1. 杂质C 2. 杂质D
 3. 磺丁基倍他环糊精 4. 杂质A

组分	保留时间 (min)	理论塔板数 (USP)	拖尾因子 (USP)	分离度 (USP)
杂质C	2.643	3567	1.13	/
杂质D	3.189	4799	1.18	3.02
杂质A	7.329	23866	1.00	12.3