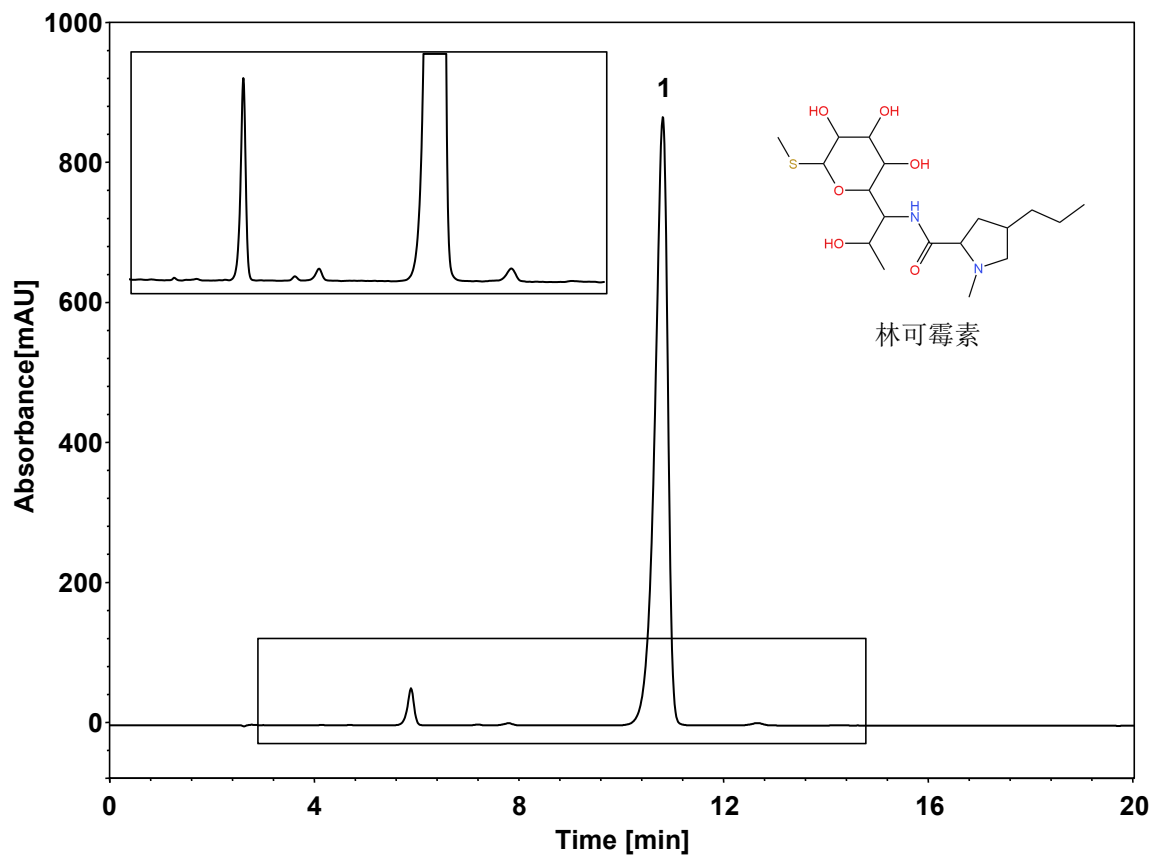


盐酸林可霉素



Column: ChromCore 120 C8, 5 μ m
Dimension: 4.6 \times 250 mm
Mobile Phase: 8/17/75 v/v 甲醇/乙腈/磷酸盐缓冲液, pH6.1
Flow Rate: 1.0 mL/min
Temperature: 50 $^{\circ}$ C
Injection: 20 μ L
Detection: UV 210 nm
Instrument: SHIMADZU LC-2030C
Sample: 盐酸林可霉素 (2.5 mg/mL)
Peak: 1. 林可霉素

组分	保留时间 (min)	理论塔板数 (USP)	拖尾因子 (USP)	分离度 (USP)
林可霉素	10.802	8826	0.773	4.165