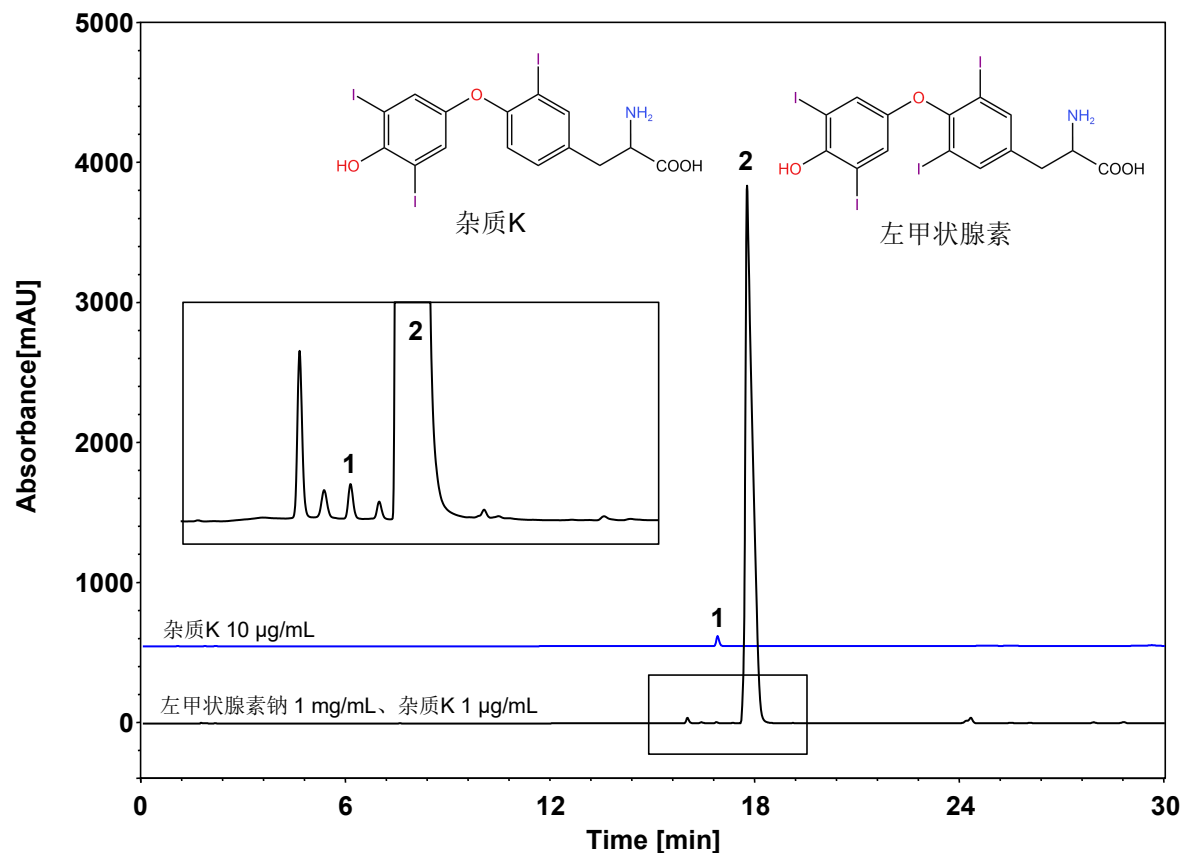


左甲状腺素钠



Column: ChromCore 120 C18, 5 μm

Dimension: 4.6 \times 150 mm

Mobile Phase: A) 0.1% 磷酸水
B) 乙腈

Gradient:	t (min)	%A	%B
	0	90	10
	30	30	70
	31	90	10
	45	90	10

Flow Rate: 1.0 mL/min

Temperature: 30 $^{\circ}\text{C}$

Injection: 10 μL

Detection: UV 225 nm

Instrument: SHIMADZU LC-2030C

Sample: 左甲状腺素钠

Peaks: 1. 杂质K
2. 左甲状腺素

组分	保留时间 (min)	理论塔板数 (USP)	拖尾因子 (USP)	分离度 (USP)
左甲状腺素	17.741	31503	1.944	1.503