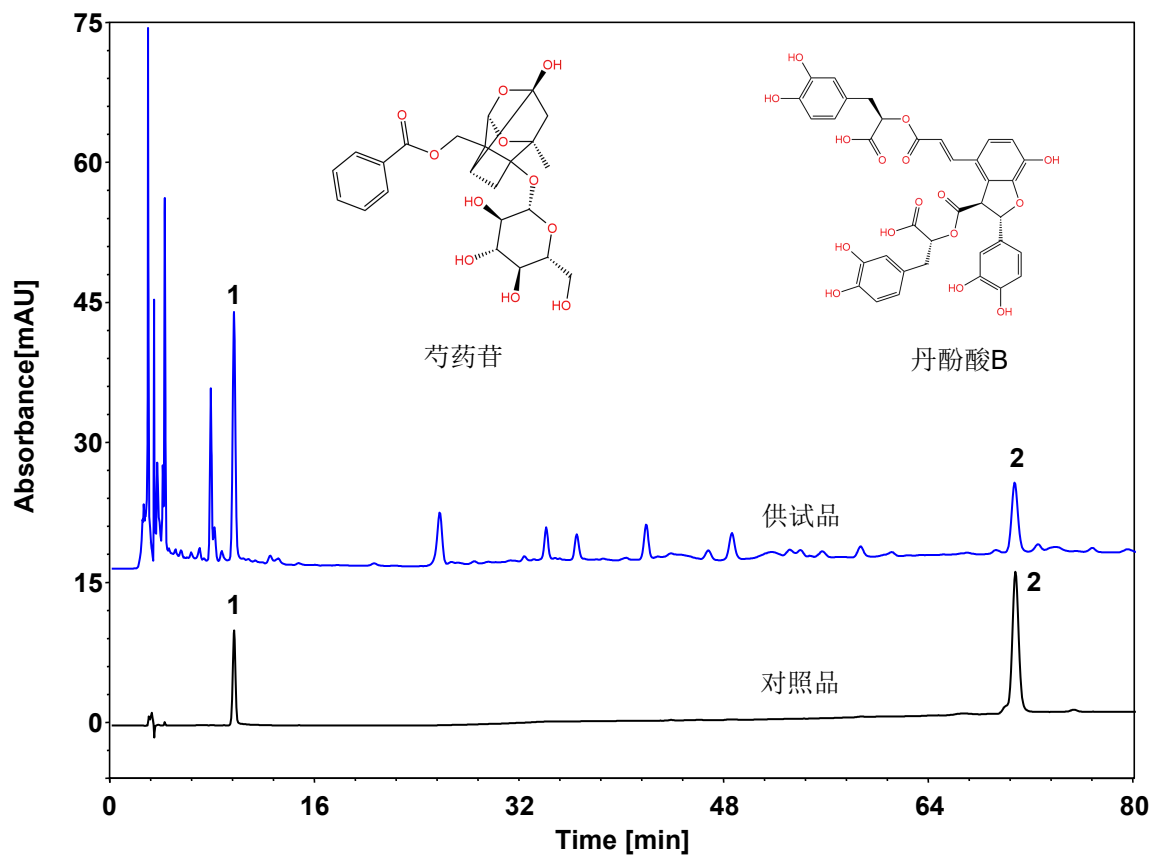


# 精制冠心颗粒



Column: ChromCore Polar C18, 5  $\mu$ m

Dimension: 4.6  $\times$  250 mm

Mobile Phase: A) 0.1% 磷酸溶液  
B) 乙腈

Gradient:	t (min)	%A	%B
	0	86	14
	20	86	14
	30	81	19
	43	80	20
	70	76	24
	77	76	24
	78	86	14
	95	86	14

Flow Rate: 1.0 mL/min

Temperature: 30  $^{\circ}$ C

Injection: 10  $\mu$ L

Detection: UV 230 nm

Instrument: Agilent Infinity II 1260

Sample: 精制冠心颗粒

Peaks:  
1. 芍药苷  
2. 丹酚酸B

组分	保留时间 (min)	理论塔板数 (USP)	拖尾因子 (USP)	分离度 (USP)
芍药苷	9.557	9739	1.029	/
丹酚酸B	70.609	97394	0.934	94.4