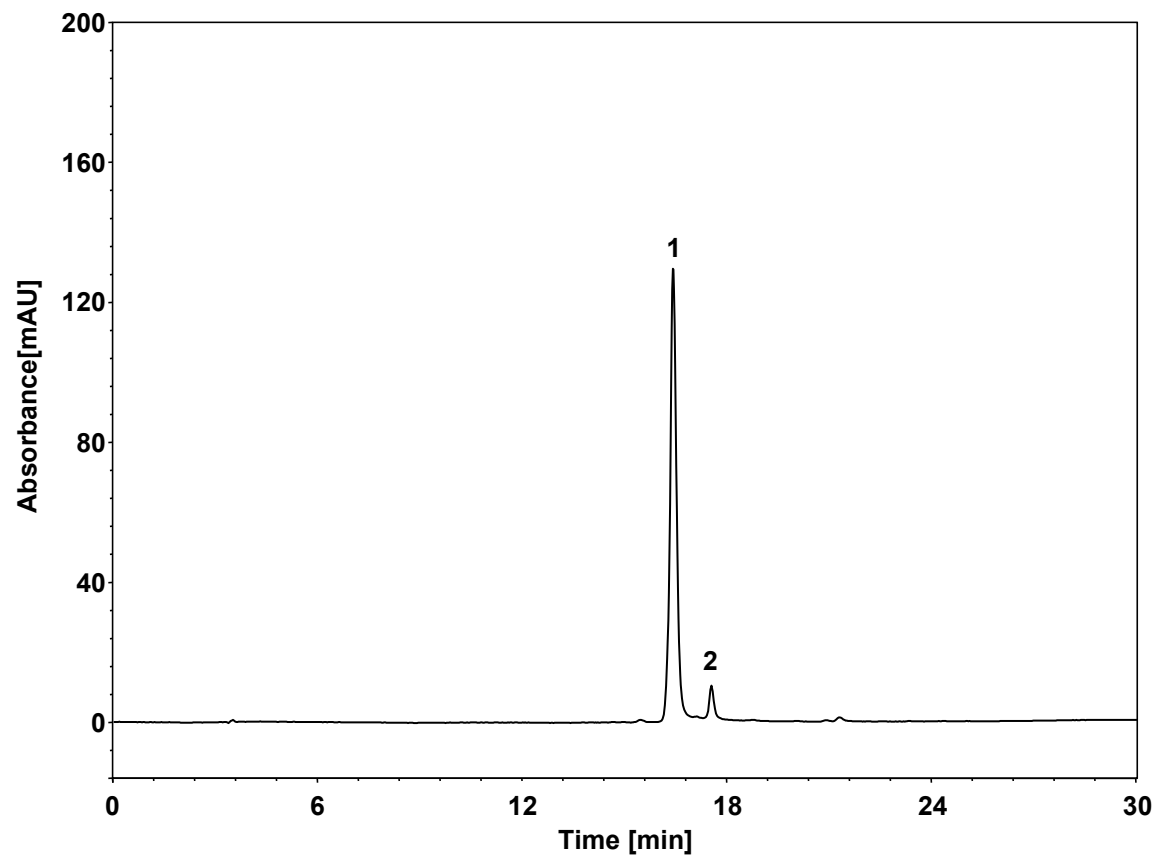


# rEPA (蛋白)



Column: ChromCore 300 C4-T, 5  $\mu$ m  
Dimension: 4.6  $\times$  250 mm  
Mobile Phase: A) 0.1% 三氟乙酸水  
B) 0.1% 三氟乙酸乙腈  
Gradient: t (min) %A %B  
0 90 10  
30 20 80  
31 90 10  
45 90 10  
Flow Rate: 1.0 mL/min  
Temperature: 30  $^{\circ}$ C  
Injection: 10  $\mu$ L  
Detection: UV 280 nm  
Instrument: Waters 2695  
Sample: rEPA (2.4 mg/mL)

组分	保留时间 (min)	理论塔板数 (USP)	拖尾因子 (USP)	分离度 (USP)
1	16.425	39797	1.039	/
2	17.547	82336	1.192	3.77