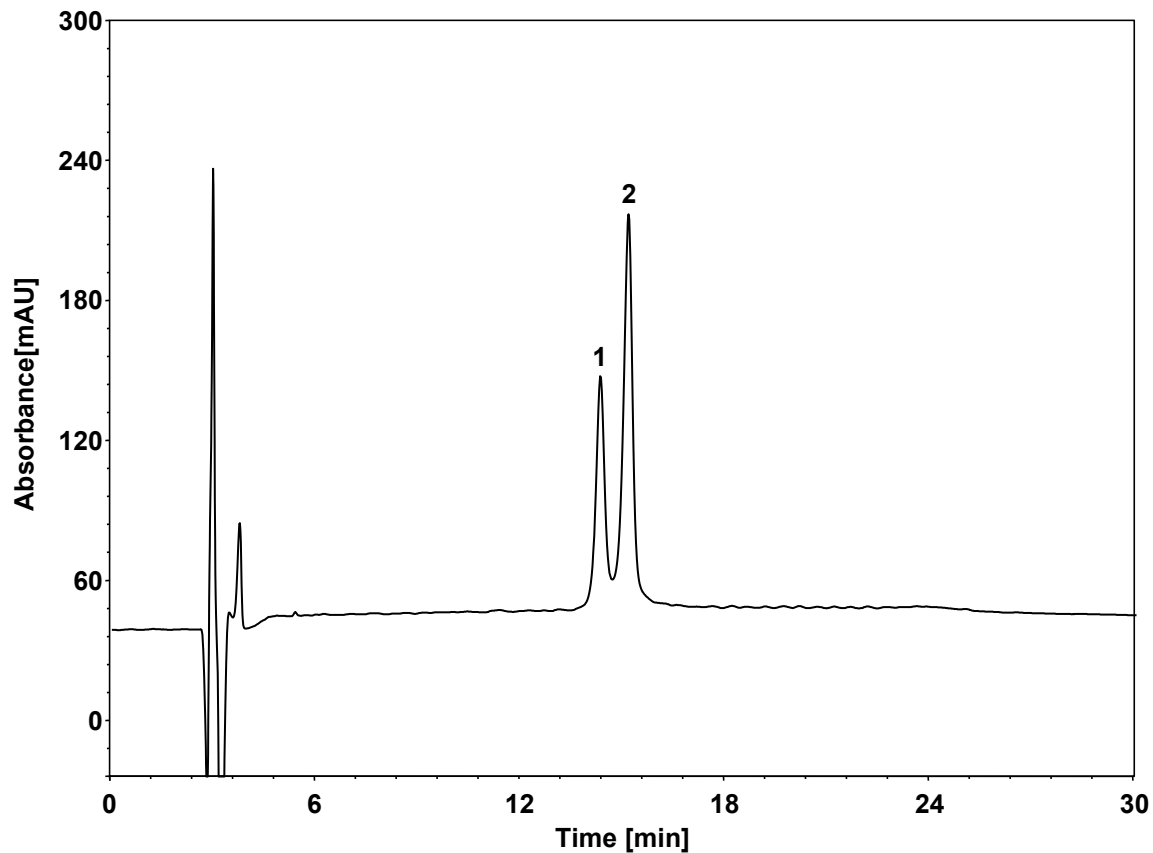


降纤酶



Column: ChromCore Phenyl, 5 μ m
Dimension: 4.6 \times 250 mm
Mobile Phase: A) 0.1% 三氟乙酸水
B) 0.1% 三氟乙酸乙腈
Gradient: t (min) %A %B
0 75 25
30 40 60
30.1 75 25
45 75 25
Flow Rate: 1.0 mL/min
Temperature: 25 $^{\circ}$ C
Injection: 20 μ L
Detection: UV 280 nm
Instrument: SHIMADZU LC-2030C
Sample: 降纤酶

组分	保留时间 (min)	理论塔板数 (USP)	拖尾因子 (USP)	分离度 (USP)
1	14.310	15503	/	/
2	15.132	15427	/	1.735