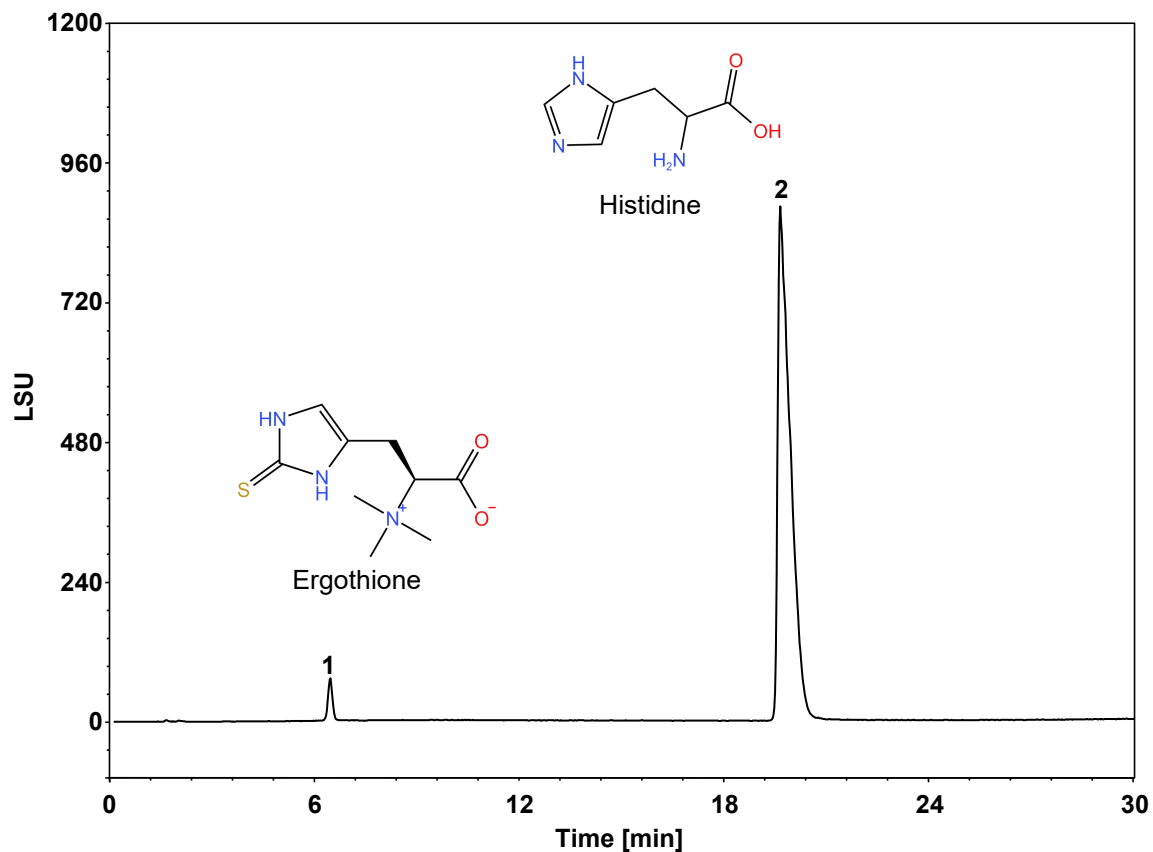


麦角硫因和组氨酸



Column: ChromCore HILIC-ZW, 5 μ m
Dimension: 4.6 \times 150 mm
Mobile Phase: A) 10 mM CH₃COONH₄, pH3.0
B) MeCN

Gradient:	t (min)	%A	%B
	0	20	80
	30	70	30
	31	20	80
	45	20	80

Flow Rate: 1.0 mL/min
Temperature: 30 $^{\circ}$ C
Injection: 10 μ L
Detection: ELSD 1290 (Evap: 65 $^{\circ}$ C, Neb: 55 $^{\circ}$ C, Gas: 1.60 SLM)
Instrument: Agilent Infinity II 1260 四元系统
Sample: Mixed standard solution
Peaks:
1. Ergothione (麦角硫因)
2. Histidine (组氨酸)