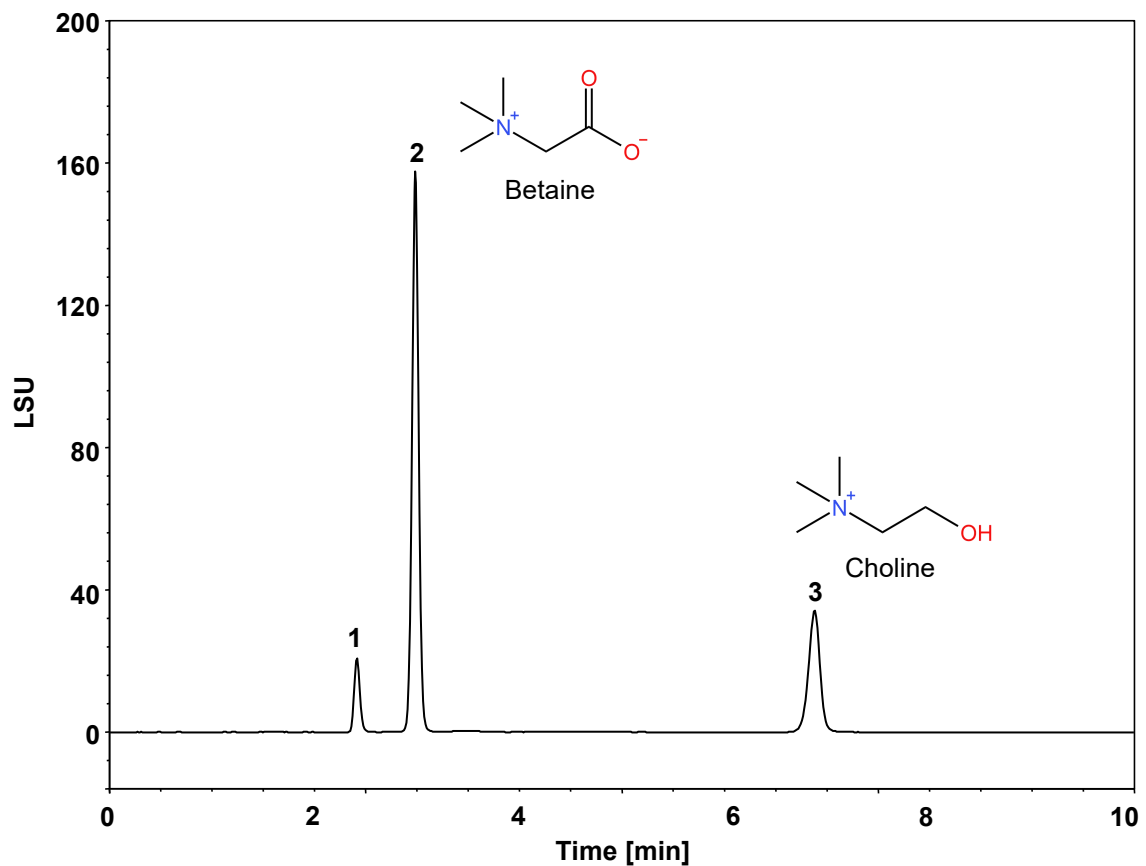


# 氯化胆碱和甜菜碱



Column: ChromCore HILIC-ZW, 5  $\mu$ m  
Dimension: 4.6  $\times$  150 mm  
Mobile Phase: 70/25/5 v/v/v MeCN/H<sub>2</sub>O/100 mM HCOONH<sub>4</sub> buffer, pH4.5  
Flow Rate: 1.0 mL/min  
Temperature: 30  $^{\circ}$ C  
Injection: 5  $\mu$ L  
Detection: ELSD 1290 (Evap: 65  $^{\circ}$ C, Neb: 55  $^{\circ}$ C, Gas: 1.60 SLM)  
Instrument: Agilent Infinity II 1290 四元系统  
Sample: Mixed standards solution (0.05 mg/mL)  
Peaks:  
1. Cl<sup>-</sup> (氯离子)  
2. Betaine (甜菜碱)  
3. Choline (胆碱)