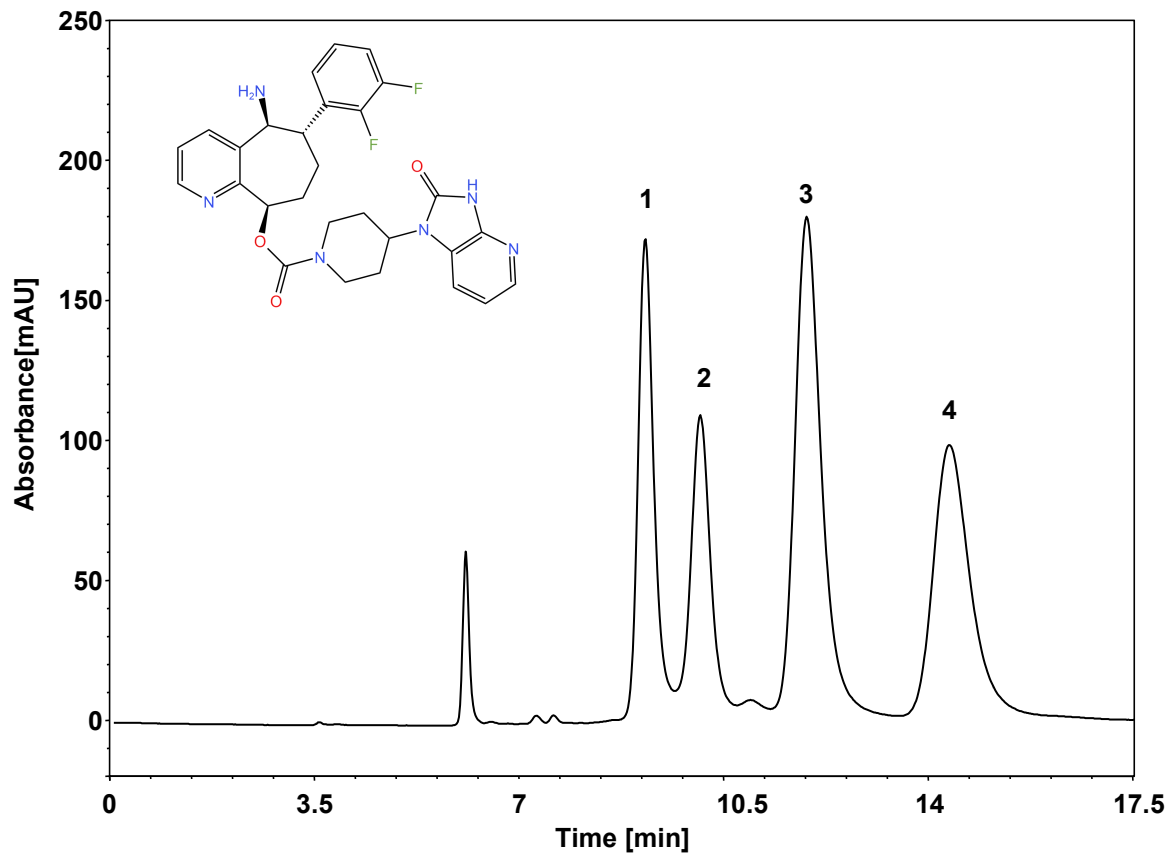


# Rimegepant



Column: ChiralCore Cel-D, 5  $\mu$ m  
Dimension: 4.6  $\times$  250 mm  
Mobile Phase: 乙醇  
Flow Rate: 0.5 mL/min  
Temperature: RT  
Injection: 5  $\mu$ L  
Detection: UV 215 nm  
Sample: Rimegepant

| 组分 | 保留时间 (min) | 理论塔板数 (USP) | 拖尾因子 (USP) | 分离度 (USP) |
|----|------------|-------------|------------|-----------|
| 1  | 9.115      | 4992        | 1.01       | /         |
| 2  | 10.057     | 3751        | 1.23       | 1.61      |
| 3  | 11.882     | 2915        | 1.77       | 2.38      |
| 4  | 14.332     | 2144        | 1.96       | 2.31      |