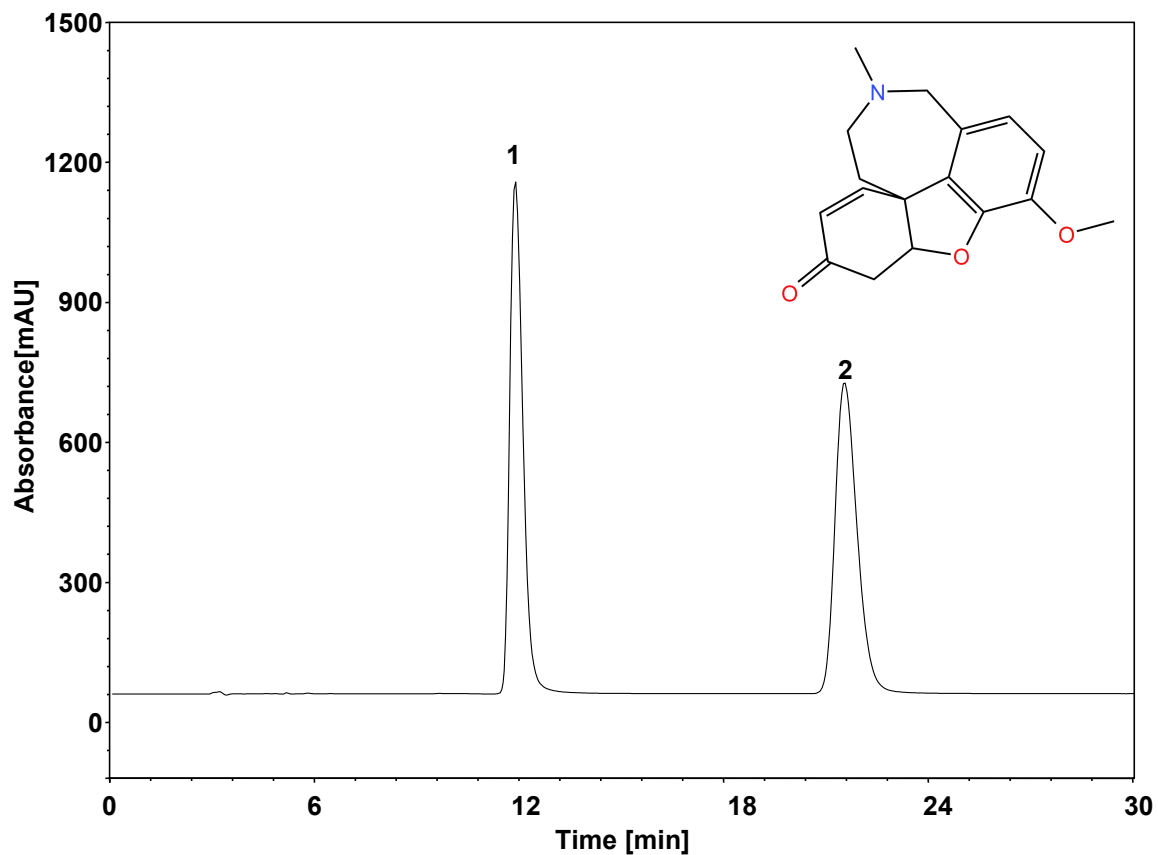


那维定



Column: ChiralCore Amy-S, 5 μm
Dimension: 4.6 \times 250 mm
Mobile Phase: 60/40 v/v 正己烷/异丙醇
Flow Rate: 1 mL/min
Temperature: 30°C
Injection: 10 μL
Detection: UV 210 nm
Sample: 那维定 (0.5 mg/mL)

组分	保留时间 (min)	理论塔板数 (USP)	拖尾因子 (USP)	分离度 (USP)
1	11.833	4584	1.374	/
2	21.508	5346	1.303	10.321