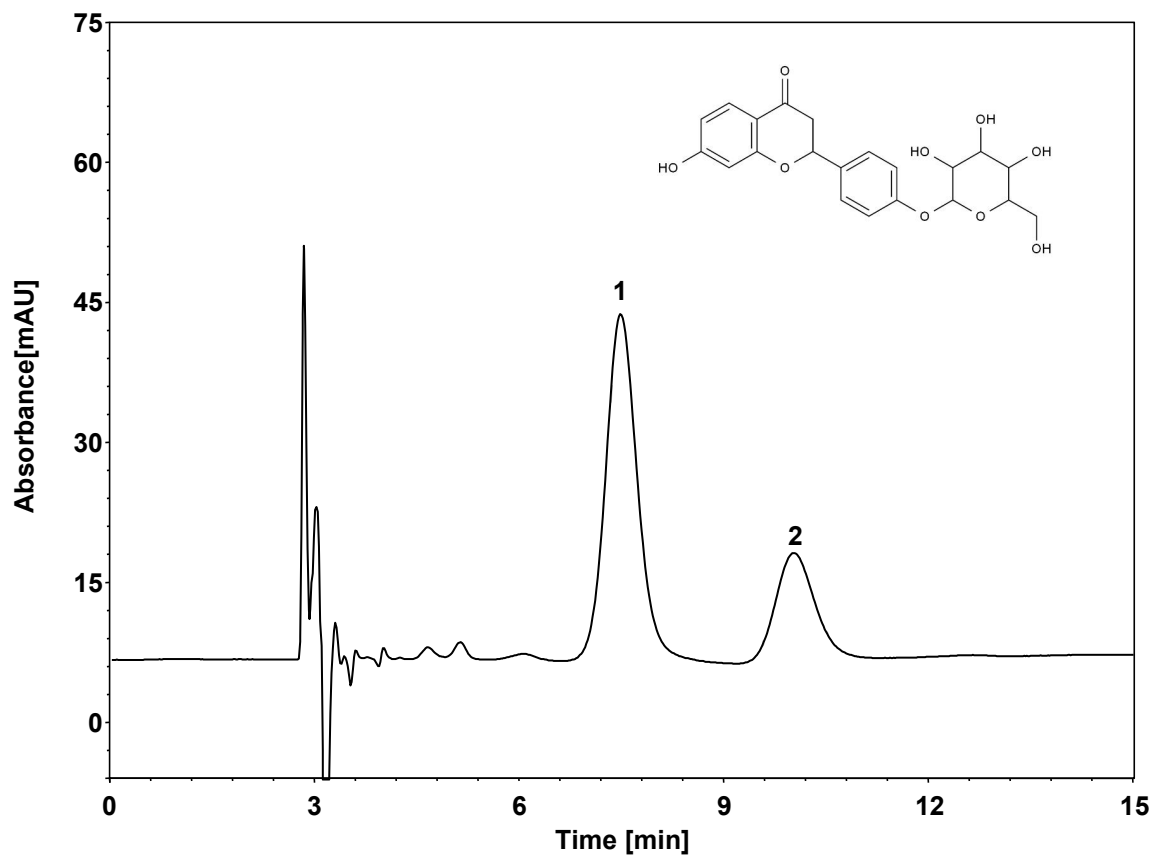


# 甘草苷



Column: ChiralCore Amy-S, 5  $\mu$ m  
Dimension: 4.6  $\times$  250 mm  
Mobile Phase: 60/20/20 v/v/v 正己烷/异丙醇/甲醇  
Flow Rate: 1.0 mL/min  
Temperature: RT  
Injection: 10  $\mu$ L  
Detection: UV 250 nm  
Sample: 甘草苷

组分	保留时间 (min)	理论塔板数 (USP)	拖尾因子 (USP)	分离度 (USP)
1	7.432	1191	1.15	/
2	9.973	1372	1.21	2.62