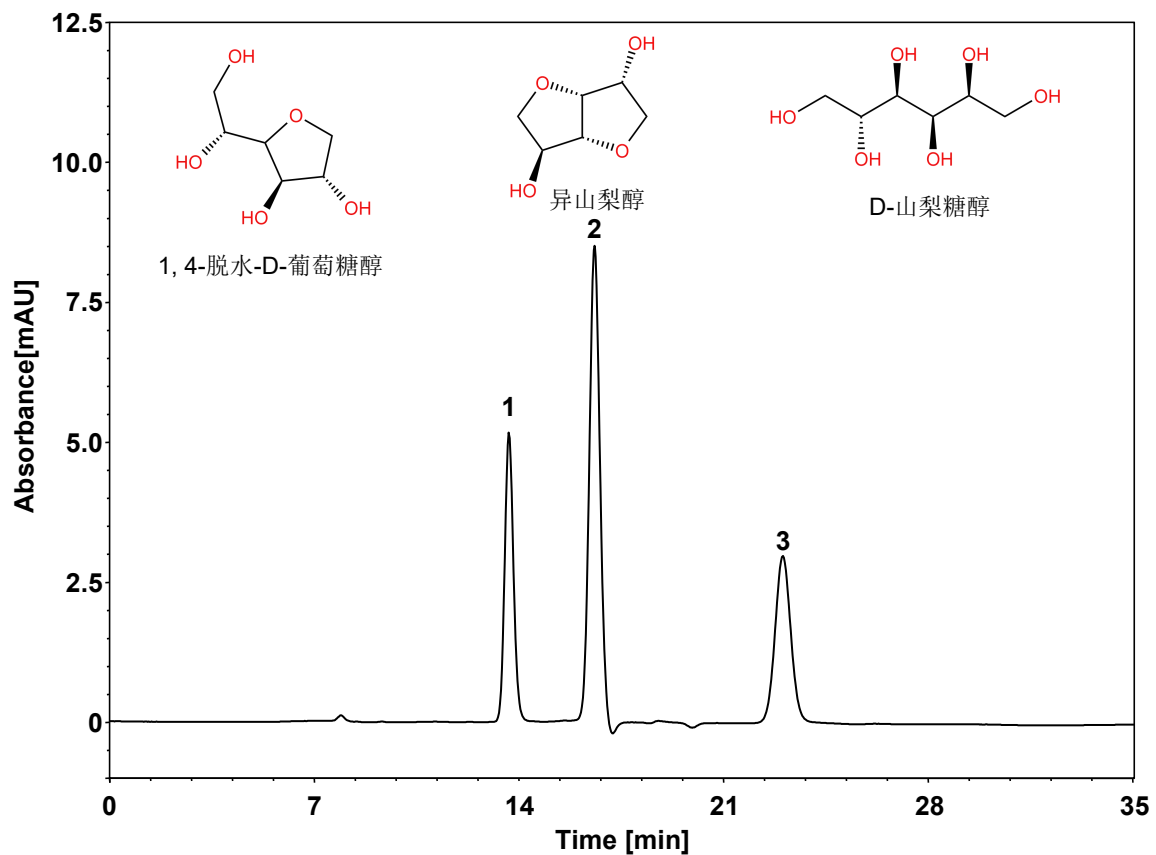


异山梨醇



Column: ChromCore Sugar-10Ca, 6 μ m
Dimension: 7.8 \times 300 mm
Mobile Phase: 水
Flow Rate: 0.5 mL/min
Temperature: 80 $^{\circ}$ C
Injection: 20 μ L
Detection: RID 40 $^{\circ}$ C
Instrument: 岛津LC-2030C
Sample: 异山梨醇
Peak:
1. 1, 4-脱水-D-葡萄糖醇 (0.33 mg/mL)
2. 异山梨醇 (0.67 mg/mL)
3. D-山梨糖醇 (0.33 mg/mL)

组分	保留时间 (min)	理论塔板数 (USP)	拖尾因子 (USP)	分离度 (USP)
1, 4-脱水-D-葡萄糖醇	13.640	9884	1.10	/
异山梨醇	16.564	9798	1.03	4.80
D-山梨糖醇	22.996	8740	1.05	7.78