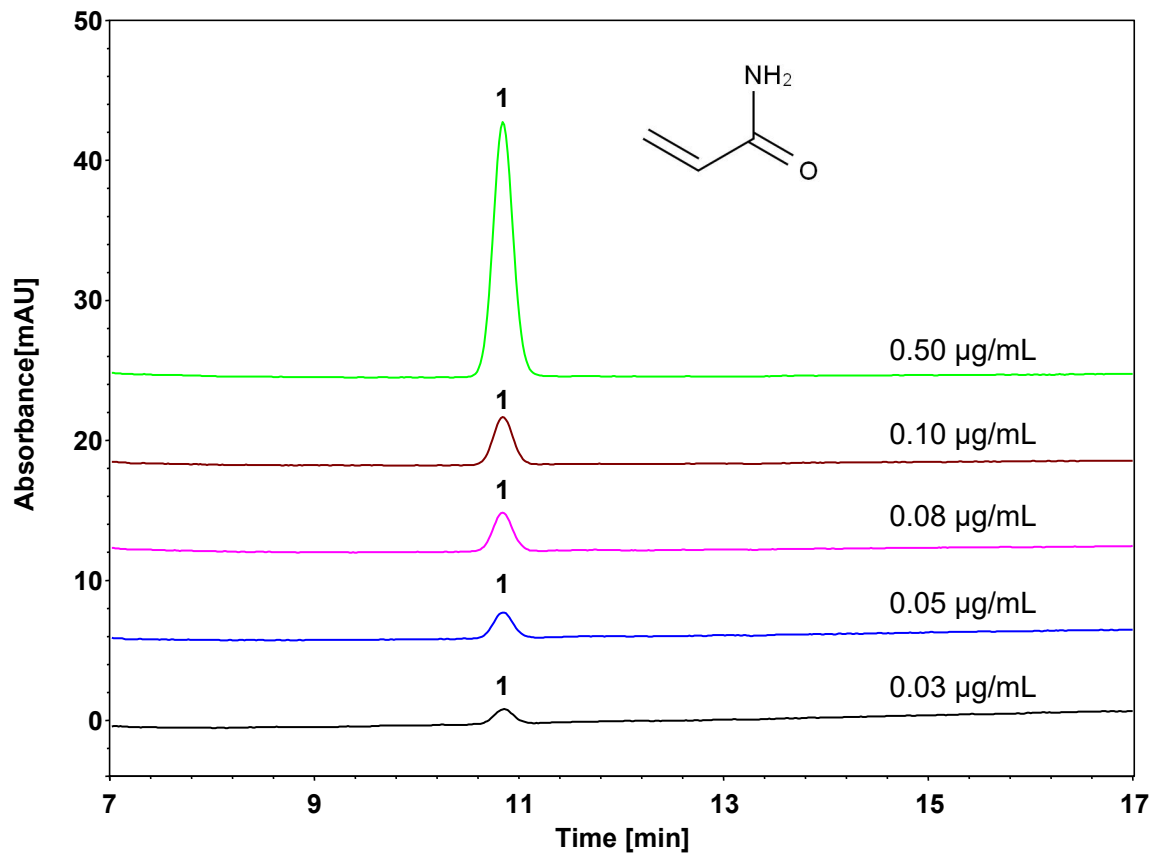


丙烯酰胺



Column: ChromCore Sugar-10H, 6 µm
Dimension: 4.6 × 250 mm
Mobile Phase: 9/91 v/v 乙腈/3.6 mM 硫酸水溶液
Flow Rate: 0.5 mL/min
Temperature: 50 °C
Injection: 20 µL
Detection: UV 198 nm
Instrument: Waters 2695
Sample: Acrylamide (丙烯酰胺)
Peak: 1. 丙烯酰胺

组分	保留时间 (min)	理论塔板数 (USP)	拖尾因子 (USP)	峰面积
0.03 µg/mL	10.864	12955	1.021	10911
0.05 µg/mL	10.855	14333	1.078	19899
0.08 µg/mL	10.850	14206	1.041	30013
0.10 µg/mL	10.854	13944	1.020	38167
0.05 µg/mL	10.853	13744	1.031	205825

