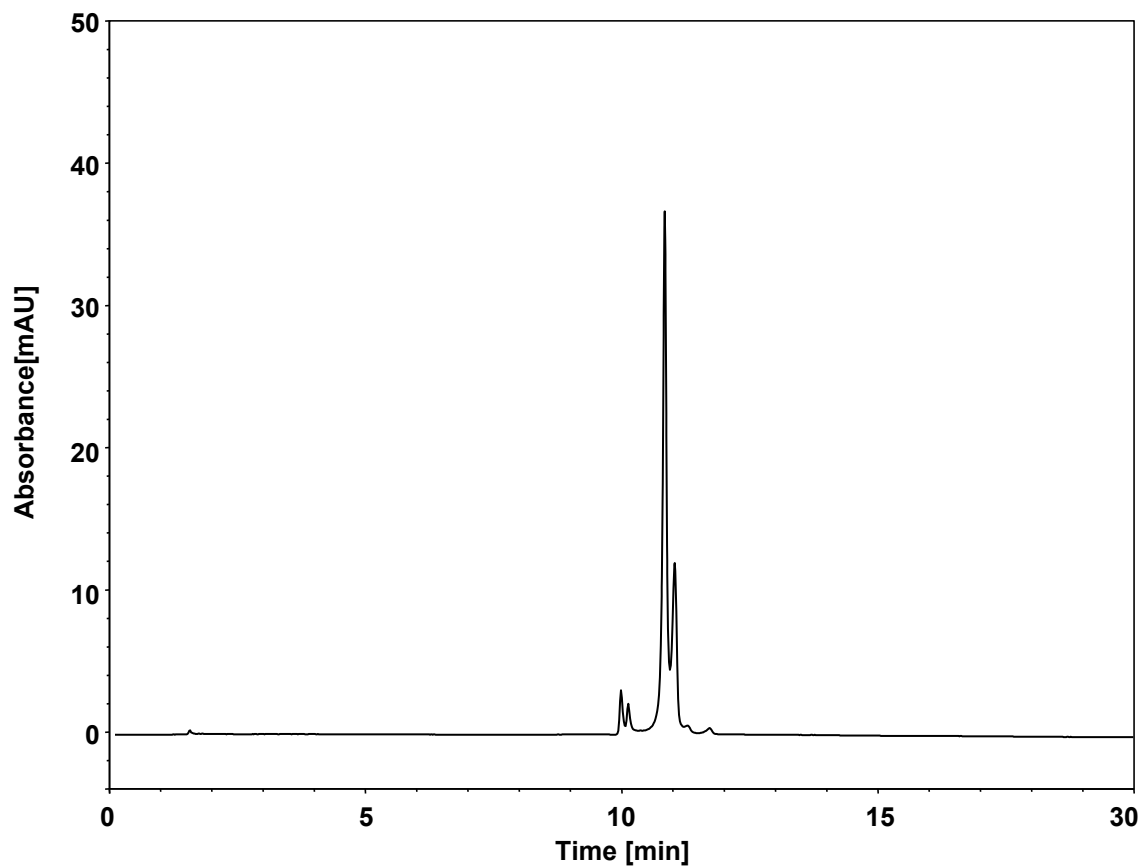


质粒



Column: DNACore NP-Q, 5 μ m
Dimension: 4.6 \times 250 mm
Mobile Phase: A) 20 mM Tris, pH8.5
B) 1 M NaCl in 20 mM Tris, pH8.5

Gradient:

t (min)	%A	%B
0	40	60
0.5	40	60
30	0	100
33	0	100
33.1	50	50
45	50	50

Flow Rate: 0.7 mL/min
Temperature: 30 $^{\circ}$ C
Injection: 10 μ L
Detection: UV 260 nm
Instrument: Agilent 1290 Infinity II (Bio)
Sample: Plasmid (3737 bp)