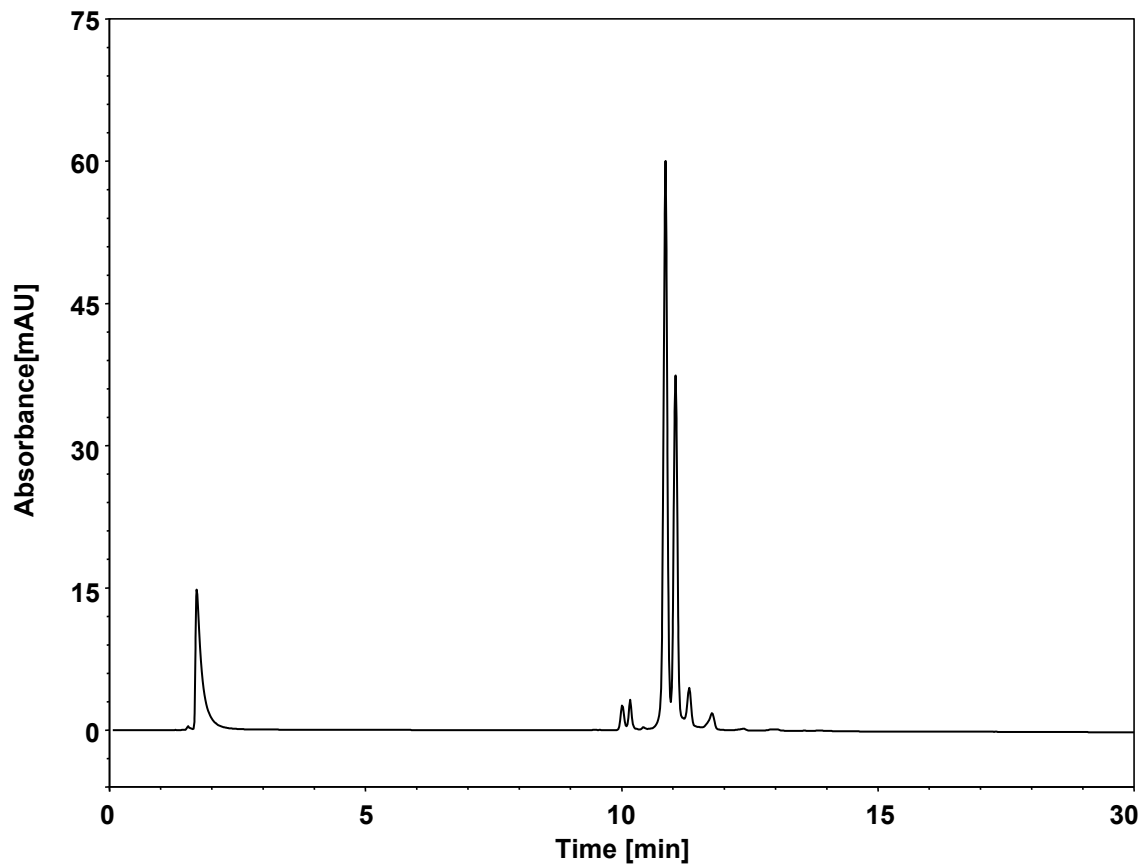


# 质粒



Column: DNACore NP-Q, 5  $\mu$ m  
Dimension: 4.6  $\times$  250 mm  
Mobile Phase: A) 20 mM Tris, pH8.5  
B) 1 M NaCl in 20 mM Tris, pH8.5  
Gradient: 

t (min)	%A	%B
0	40	60
0.5	40	60
30	0	100
33	0	100
33.1	50	50
45	50	50

  
Flow Rate: 0.7 mL/min  
Temperature: 30  $^{\circ}$ C  
Injection: 10  $\mu$ L  
Detection: UV 260 nm  
Instrument: Agilent 1290 Infinity II (Bio)  
Sample: Plasmid (0.1454 mg/mL 3764 bp)