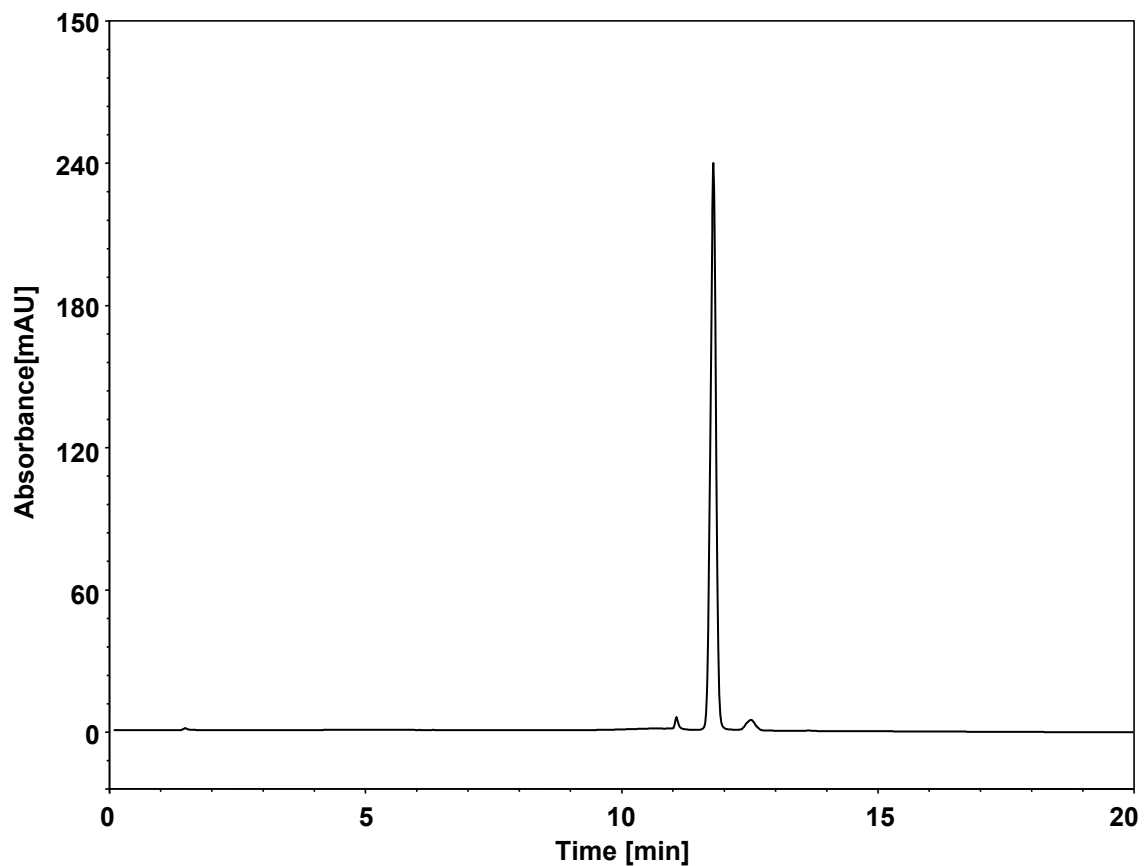


质粒



Column: DNACore NP-Q, 5 μ m
Dimension: 4.6 \times 150 mm
Mobile Phase: A) 20 mM Tris, pH8.0
B) 1 M NaCl in 20 mM Tris, pH8.0
Gradient:

t (min)	%A	%B
0	50	50
1	50	50
20	0	100
23	0	100
23.1	50	50
35	50	50

Flow Rate: 0.7 mL/min
Temperature: 30 $^{\circ}$ C
Injection: 10 μ L
Detection: UV 260 nm
Instrument: Agilent 1290 Infinity II (Bio)
Sample: 质粒 (0.2 mg/mL)