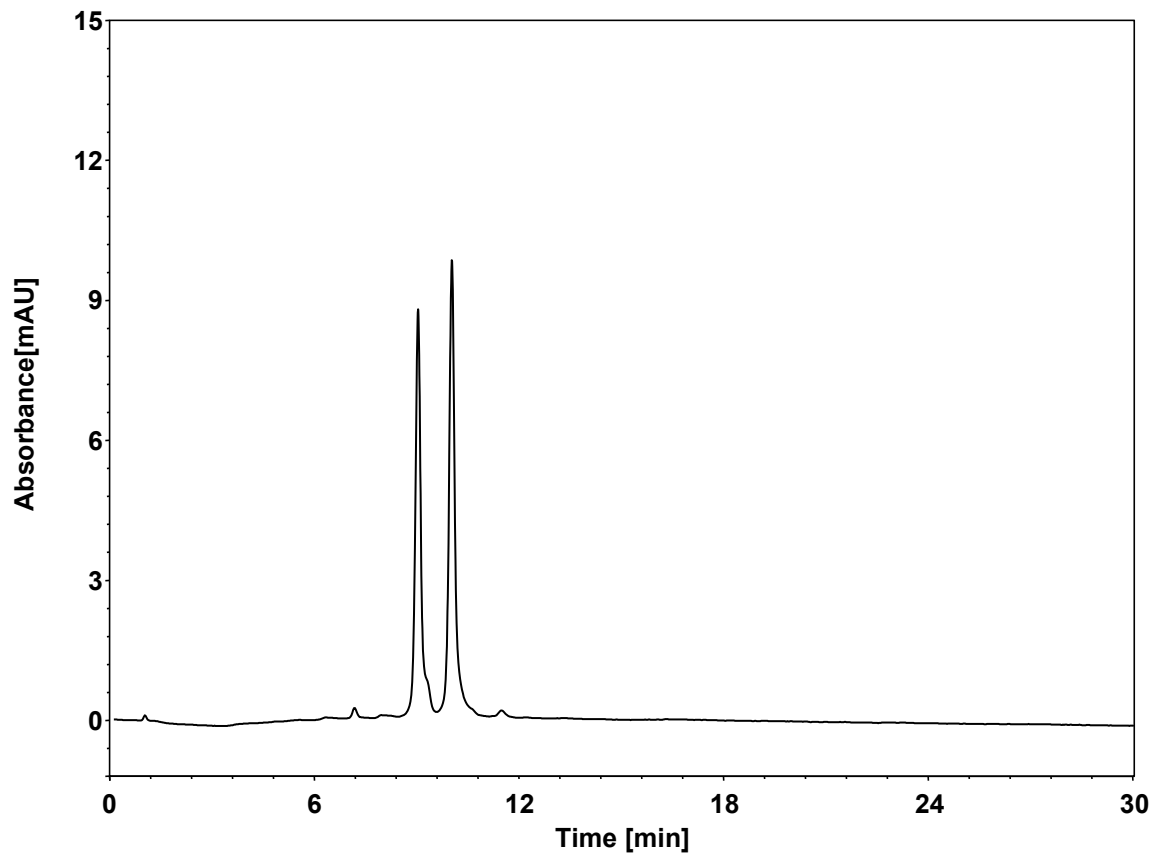


蛋白



Column: BioCore SAX, 10 μ m

Dimension: 4.6 \times 150 mm

Mobile Phase: A) 20 mM Tris, pH7.0

B) 250 mM NaCl in 20 mM Tris, pH7.0

Gradient: t (min) %A %B

0 100 0

0.5 100 0

30 60 40

30.1 100 0

40 100 0

Flow Rate: 1 mL/min

Temperature: 30 $^{\circ}$ C

Injection: 5 μ L

Detection: UV 280 nm

Instrument: Agilent 1290 Infinity II (Bio)

Sample: 蛋白 (2 mg/mL pl 4~5)