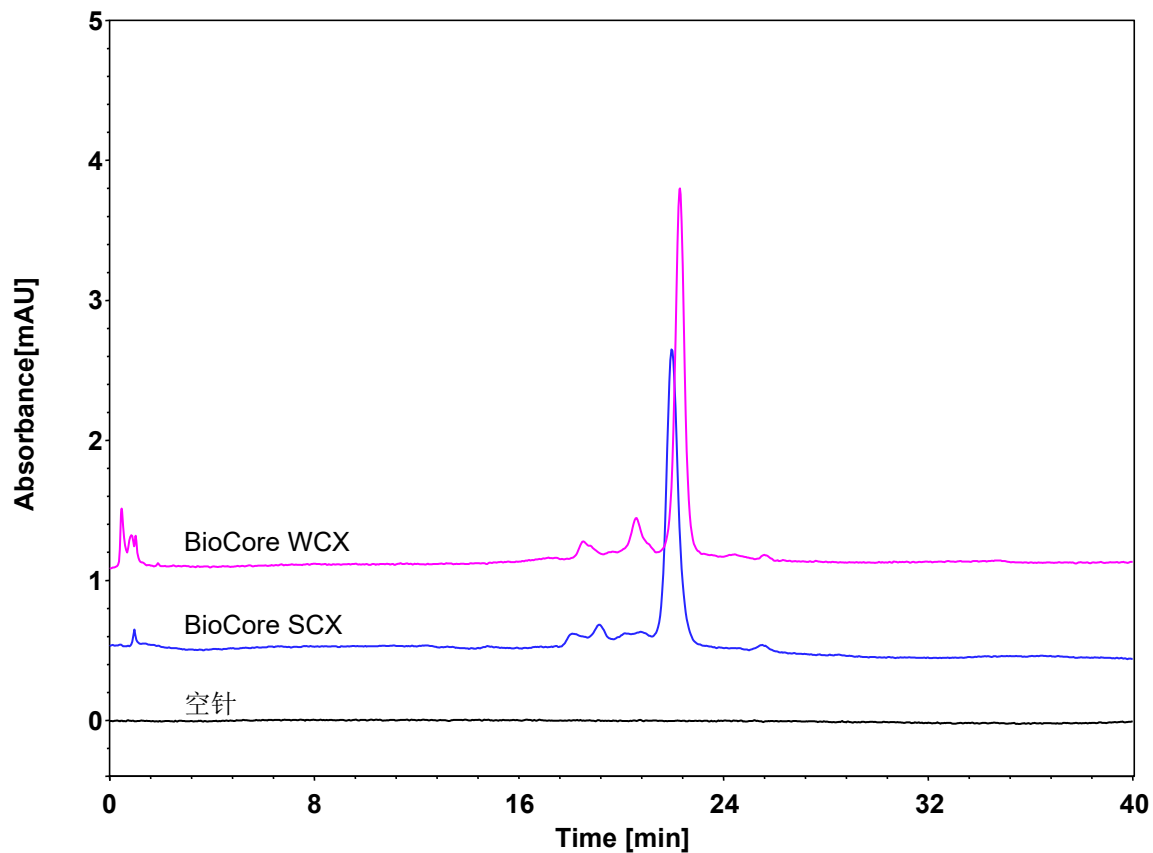


# 双抗



Columns:

Pink: BioCore WCX, 10  $\mu$ m

Blue: BioCore SCX, 10  $\mu$ m

Dimension: 4.6  $\times$  150 mm

Mobile Phase: A) 20 mM phosphate buffer, pH6.5

B) 300 mM NaCl in 20 mM phosphate buffer, pH6.5

Gradient:

t (min)	%A	%B
0	100	0
0.1	100	0
40	70	30
40.1	0	100
43	0	100

Flow Rate: 1.0 mL/min

Temperature: 30  $^{\circ}$ C

Injection: 3  $\mu$ L

Detection: UV 280 nm

Instrument: Agilent 1290 Infinity II (Bio)

Sample: 双抗 (pI: 7.86 浓度: 1.72 mg/mL)

