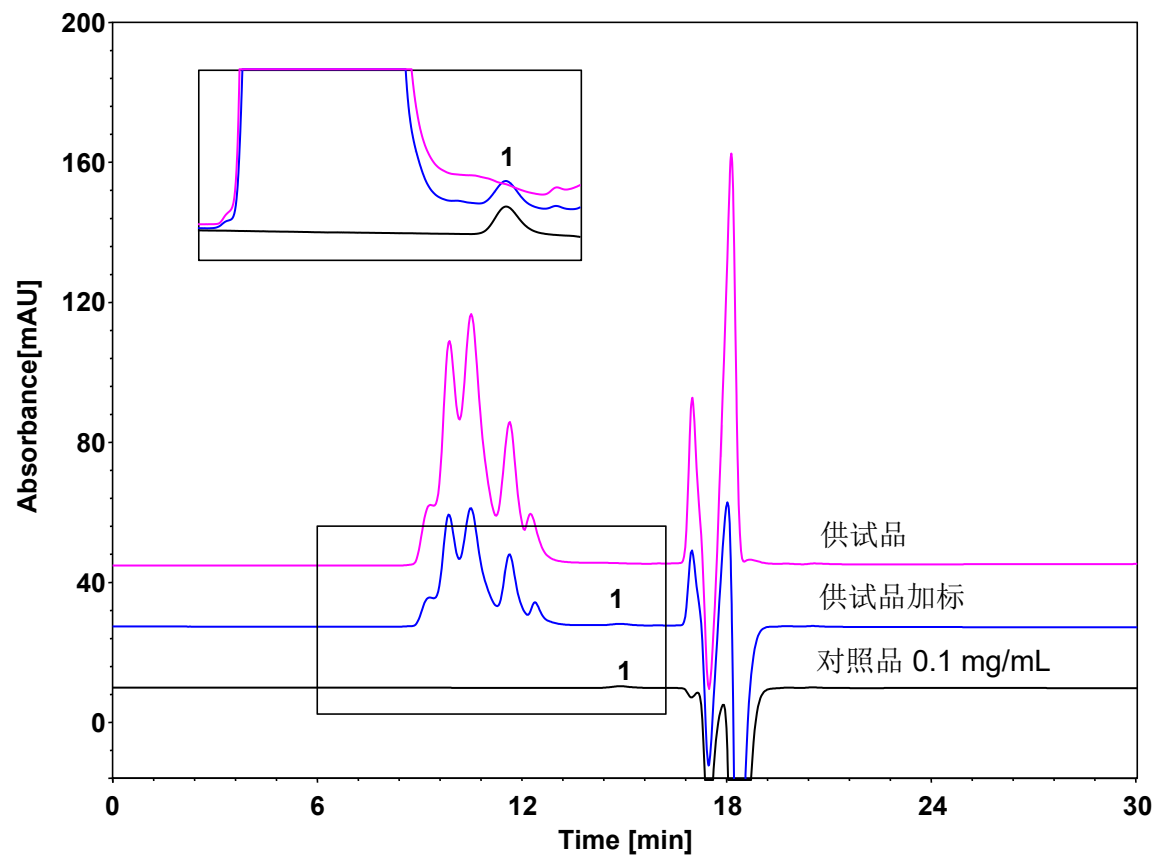


人凝血酶原复合物-聚乙二醇3350



Column: BioCore SEC-150, 5 μ m
Dimension: 7.8 \times 300 mm
Mobile Phase: 300 mM NaCl in 50 mM phosphate buffer, pH6.8
Flow Rate: 0.6 mL/min
Temperature: 35 $^{\circ}$ C
Injection: 20 μ L
Detection: RID 35 $^{\circ}$ C
Instrument: 岛津LC-2030C
Sample: 人凝血酶原复合物
Peak: 1. PEG3350