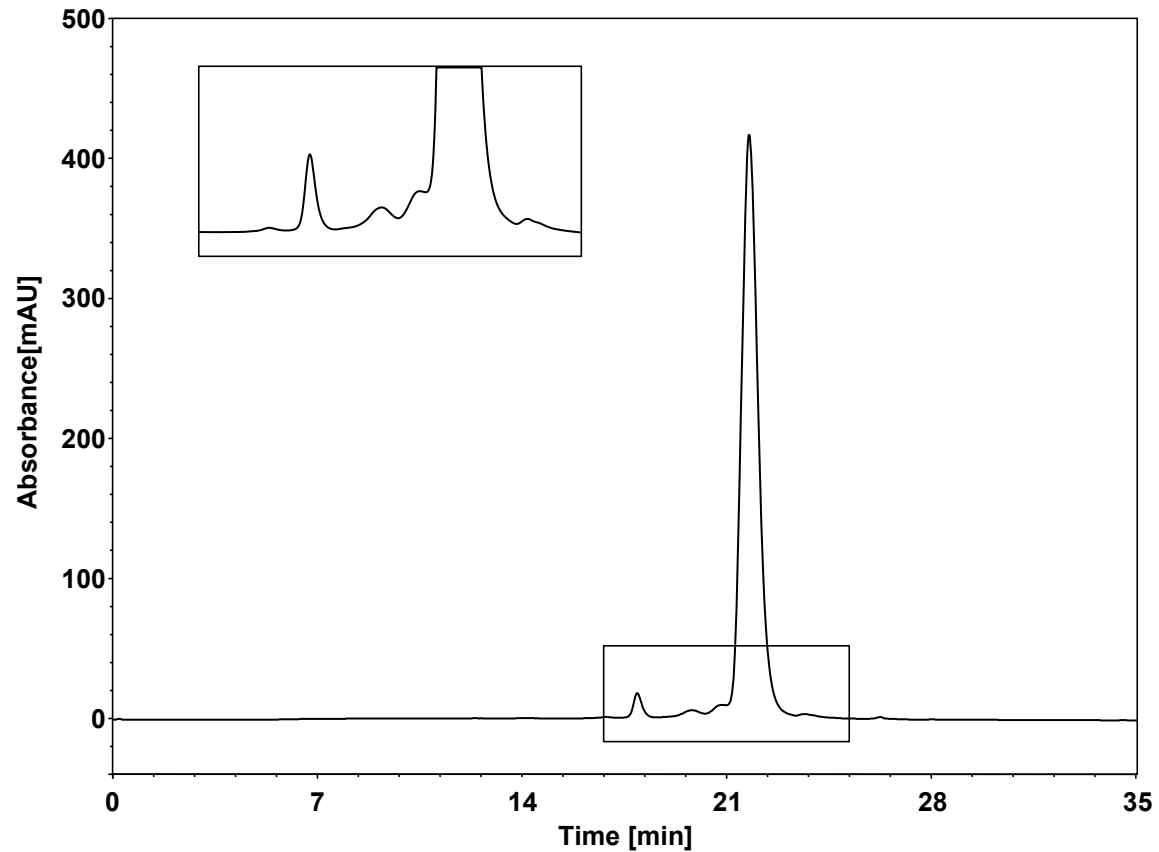


ADC



Column: BioCore SEC-150, 3 μ m
Dimension: 7.8 \times 300 mm
Mobile Phase: 5/95 v/v MeCN/300 mM NaCl in 50 mM phosphate buffer, pH6.8
Flow Rate: 0.5 mL/min
Temperature: 30 $^{\circ}$ C
Injection: 5 μ L
Detection: UV 280 nm
Instrument: Waters 2695
Sample: ADC (MW 48 KD)