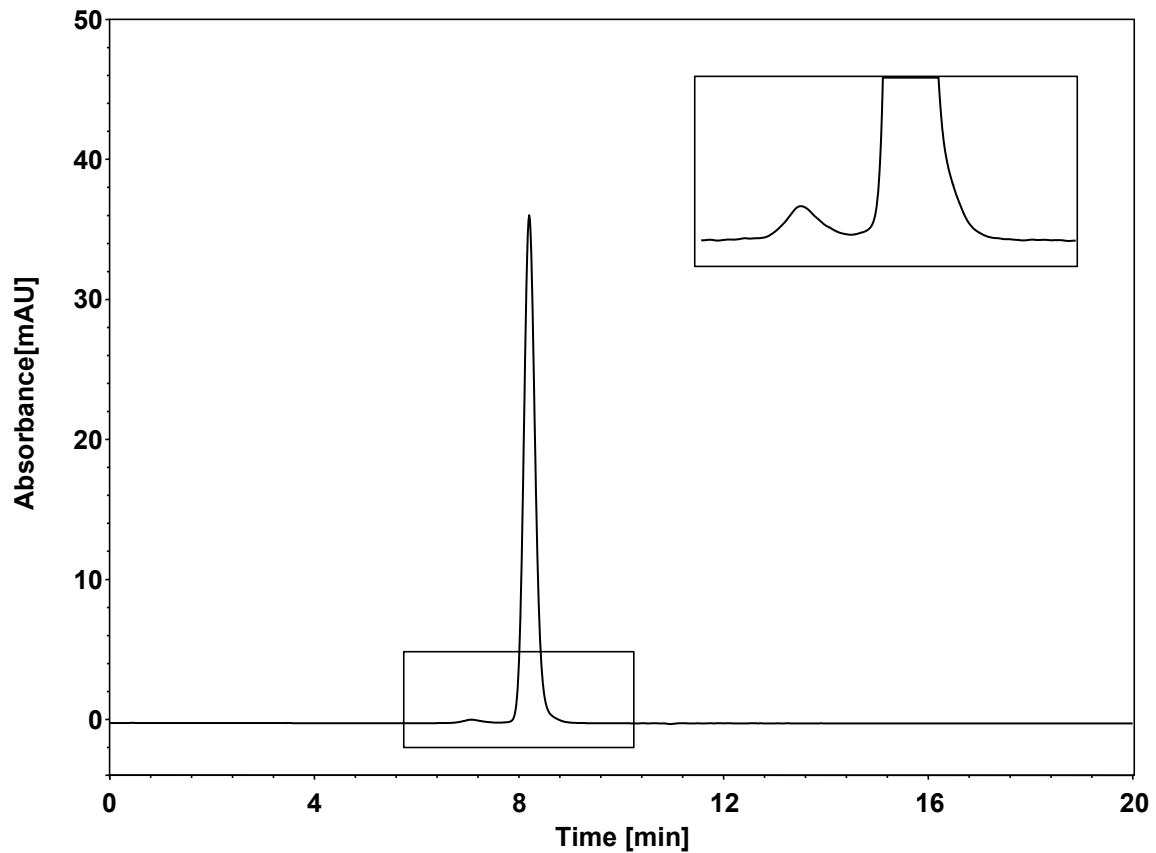


尼妥珠单抗



Column: BioCore SEC-300, 5 μ m
Dimension: 7.8 \times 300 mm
Mobile Phase: 300 mM NaCl in 50 mM phosphate buffer, pH6.8
Flow Rate: 1 mL/min
Temperature: 25 $^{\circ}$ C
Injection: 4 μ L
Detection: UV 280 nm
Instrument: Agilent 1290 Infinity II (Bio)
Sample: 尼妥珠单抗 (5 mg/mL)