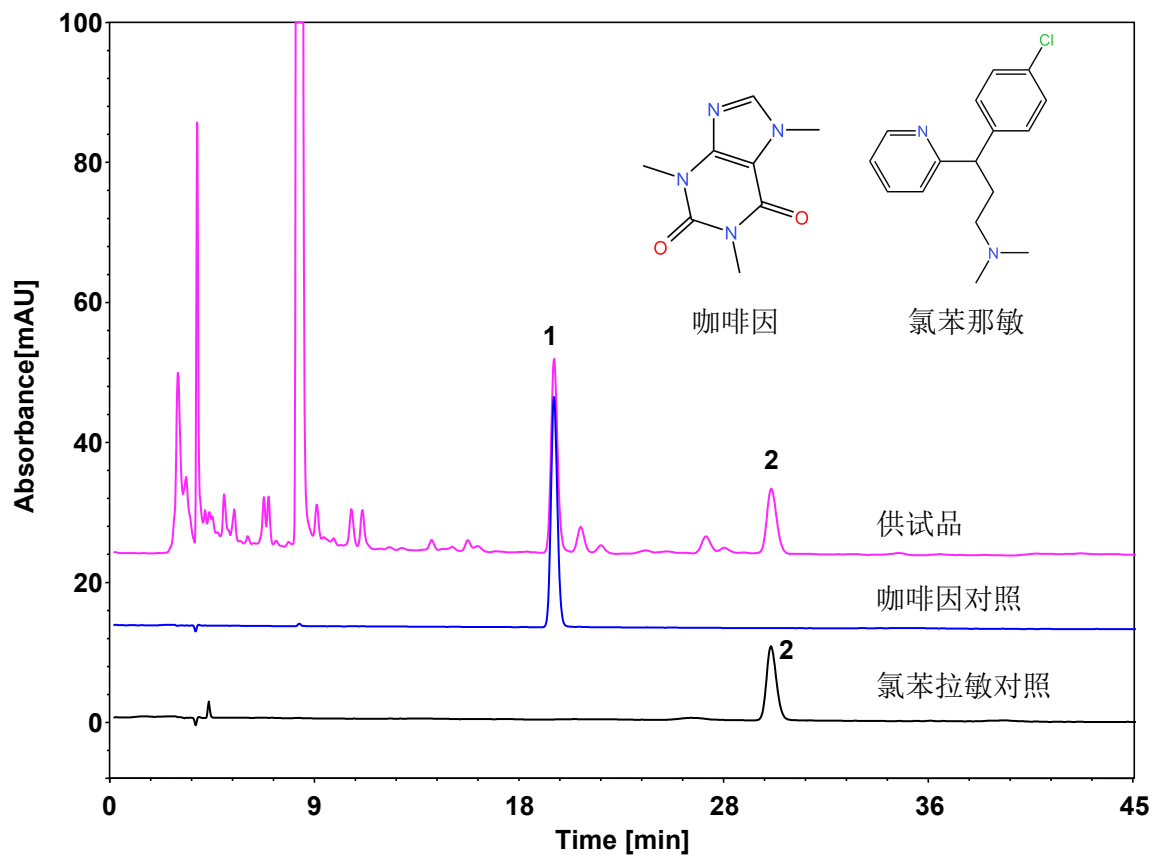


感冒灵颗粒



Column: ChromCore AQ C18, 5 μ m
Dimension: 4.6 \times 250 mm
Mobile Phase: 7.2/92.8 v/v 乙腈/水 (含0.5%磷酸与0.4%三乙胺)
Flow Rate: 1 mL/min
Temperature: 30 $^{\circ}$ C
Injection: 20 μ L
Detection: UV 264 nm
Instrument: Waters e2695
Sample: 感冒灵颗粒
Peaks:
1. 咖啡因
2. 氯苯那敏

组分	保留时间 (min)	理论塔板数 (USP)	拖尾因子 (USP)	分离度 (USP)
咖啡因	19.293	22048	1.14	/
氯苯那敏	28.934	21751	1.12	3.61