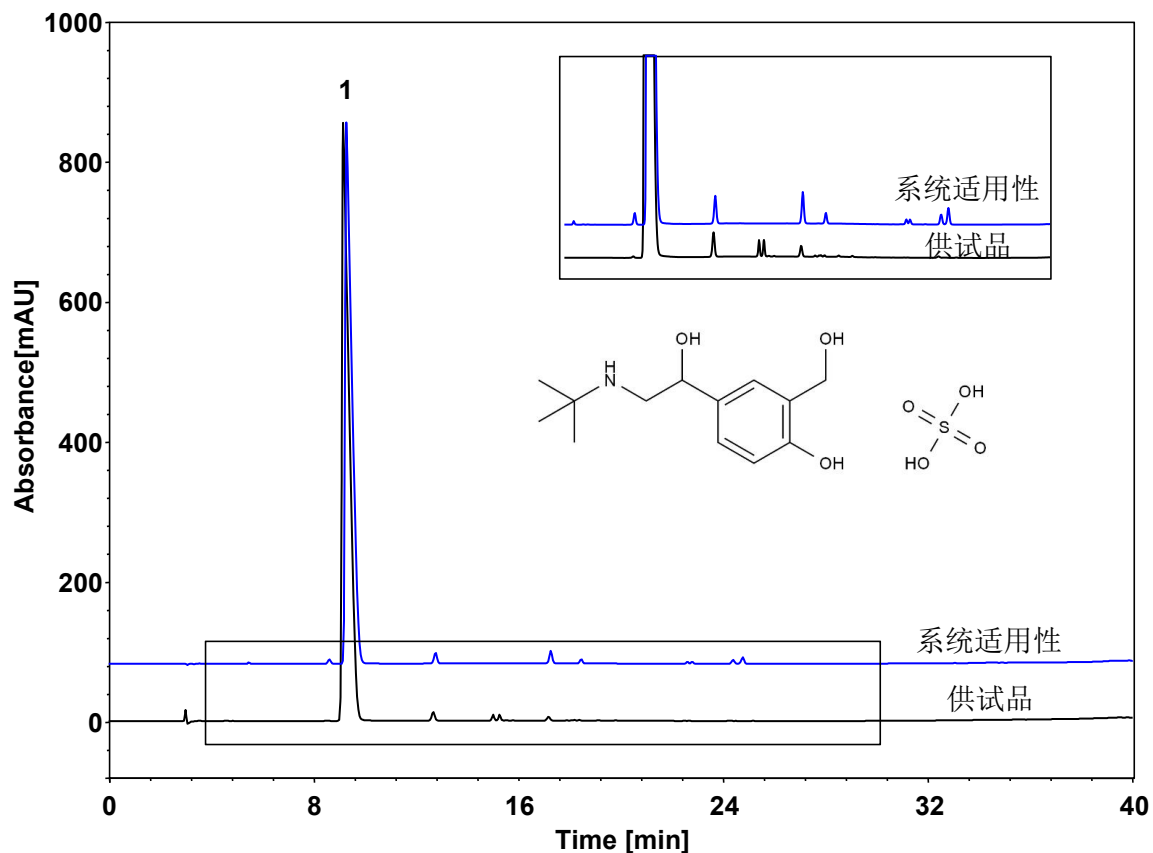


# 硫酸沙丁胺醇注射液



Column: ChromCore 300 C8, 3  $\mu$ m  
 Dimension: 4.6  $\times$  250 mm  
 Mobile Phase: A) 3.45 g/L 磷酸二氢钠 (含0.05%三乙胺), pH3.2  
 B) 甲醇

Gradient:	t (min)	%A	%B
	0	95	5
	5	95	5
	15	83	17
	25	75	25
	40	35	65
	40.1	95	5
	55	95	5

Flow Rate: 1.0 mL/min  
 Temperature: 40  $^{\circ}$ C  
 Injection: 20  $\mu$ L  
 Detection: UV 220 nm  
 Instrument: Agilent 1260  
 Sample: 硫酸沙丁胺醇  
 Peak: 1. 沙丁胺醇

组分	保留时间 (min)	理论塔板数 (USP)	拖尾因子 (USP)	分离度 (USP)
杂质J	8.624	30259	0.954	/
沙丁胺醇	9.288	6390	2.870	2.01
化合物3	12.772	58063	0.995	10.29
杂质D	17.278	116316	0.998	21.72
杂质H	18.464	152943	0.973	6.06
杂质N	22.608	253432	0.931	22.49
杂质N	22.798	249632	1.108	1.07
杂质F	24.400	205564	1.023	8.04
杂质2	24.775	227477	0.966	1.78