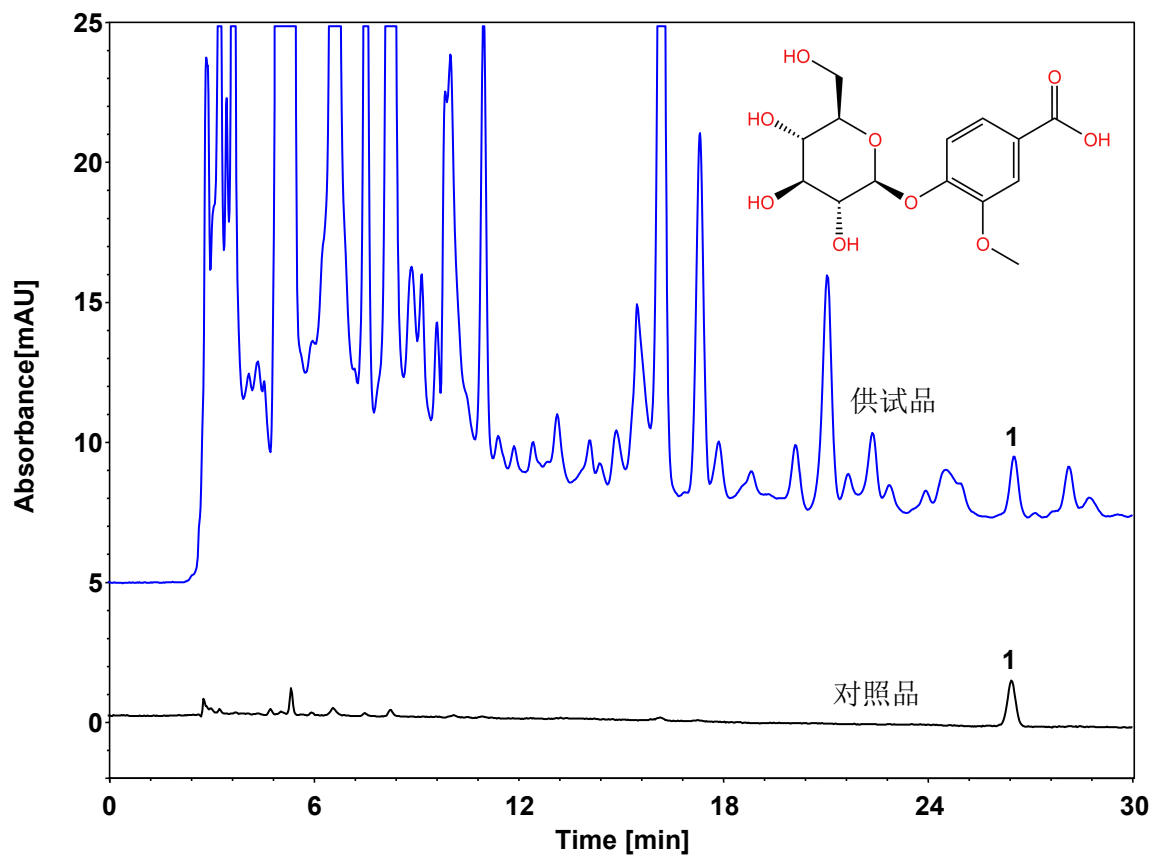


瓜蒌薤白半夏汤



Column: ChromCore AR C18, 5 μ m
Dimension: 4.6 \times 250 mm
Mobile Phase: A) 0.1%磷酸溶液
B) 乙腈

Gradient:	t (min)	%A	%B
	0	98	2
	30	93	7
	30.1	20	80
	35	20	80
	35.1	98	2
	50	98	2

Flow Rate: 1.0 mL/min
Temperature: 25 $^{\circ}$ C
Injection: 10 μ L
Detection: UV 254 nm
Instrument: Waters 2695
Sample: 瓜蒌薤白半夏汤
Peak: 1. 香草酸-4- β -D-葡萄糖苷