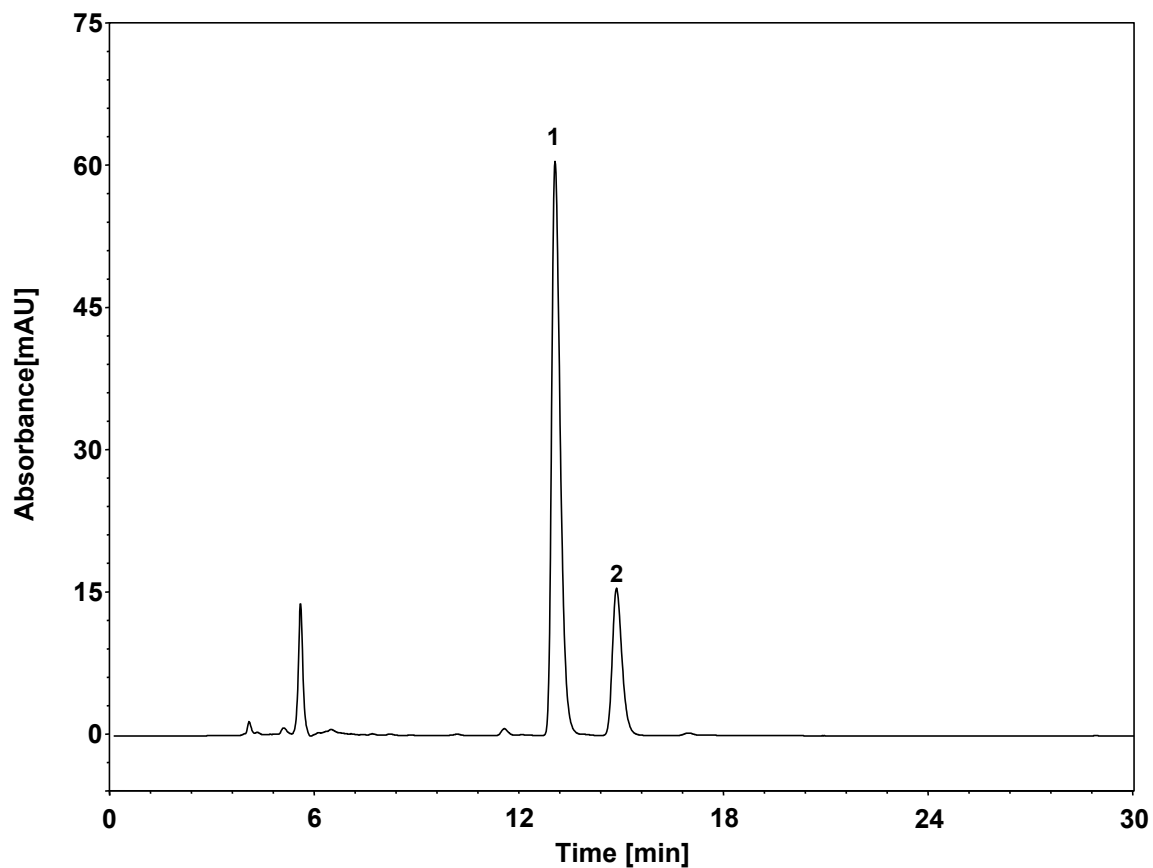


苯扎氯铵同系物



Column: ChromCore CN, 5 μm
Dimension: 4.6 \times 250 mm
Mobile Phase: 60/40 v/v 乙腈/磷酸盐缓冲液, pH5.3
Flow Rate: 1.0 mL/min
Temperature: 30 $^{\circ}\text{C}$
Injection: 30 μL
Detection: UV 214 nm
Instrument: 岛津 LC-2030C
Sample: 苯扎氯铵
Peaks: 1. 苯扎氯铵同系物C12
2. 苯扎氯铵同系物C14

组分	保留时间 (min)	理论塔板数 (USP)	拖尾因子 (USP)	分离度 (USP)
苯扎氯铵同系物C12	8.691	12205	1.444	/
苯扎氯铵同系物C14	9.902	12837	1.295	3.647