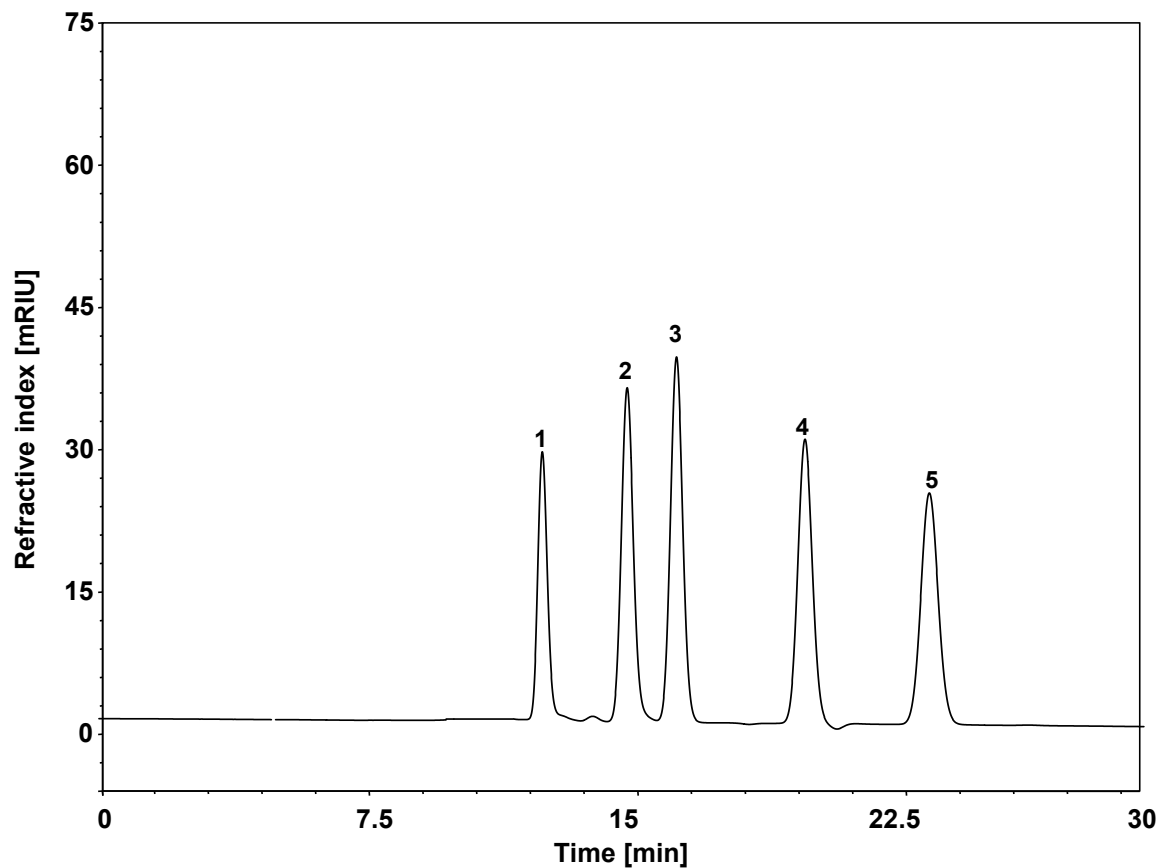


# 甘露醇



Column: ChromCore Sugar-10Ca, 6  $\mu$ m  
Dimension: 7.8  $\times$  300 mm  
Mobile Phase: 水  
Flow Rate: 0.5 mL/min  
Temperature: 80  $^{\circ}$ C  
Injection: 5  $\mu$ L  
Detection: RID  
Peaks: 1. Sucrose (蔗糖)  
2. Galactose (半乳糖)  
3. Fructose (果糖)  
4. Mannitol (甘露醇)  
5. Sorbitol (山梨醇)