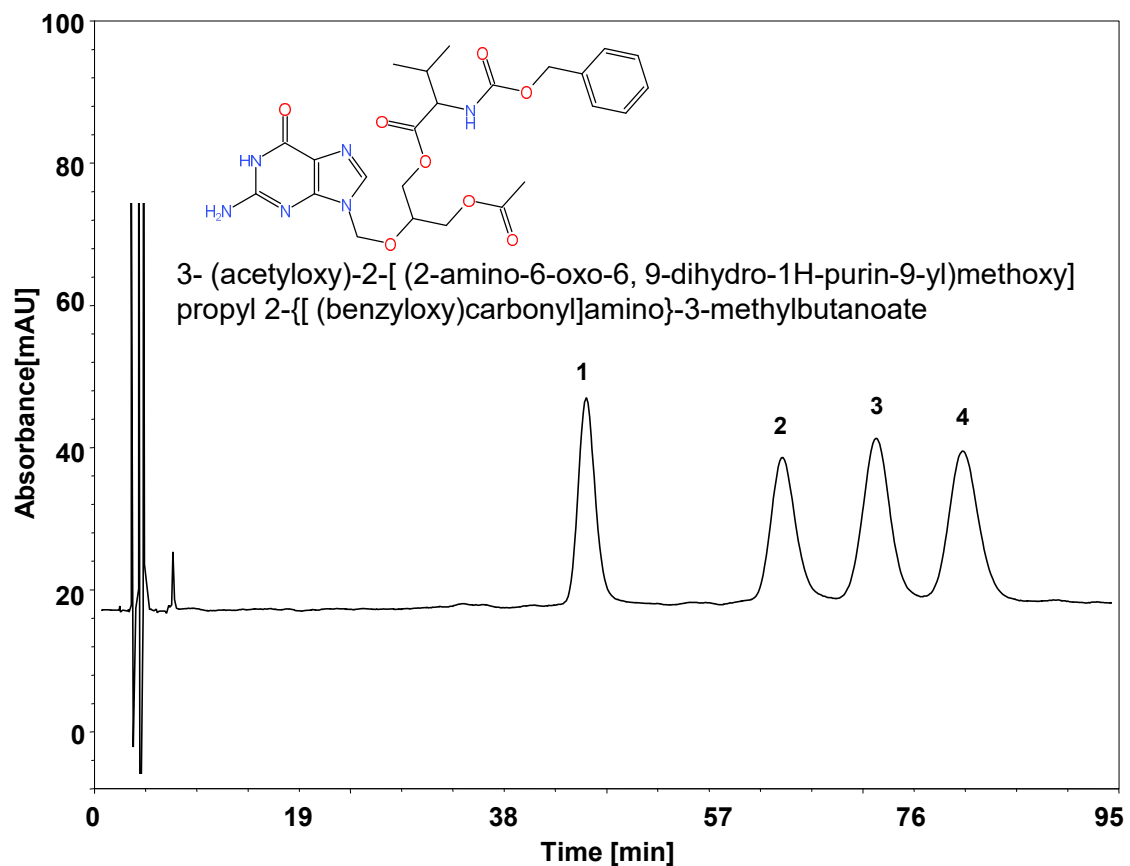


# 药物中间体



Column: ChiralCore Amy-S, 5  $\mu\text{m}$   
Dimension: 4.6  $\times$  250 mm  
Mobile Phase: 87.5/5/7.5/0.1 v/v /v/v Hexane/isopropanol/Methanol/diethylamine  
Flow Rate: 1.0 mL/min  
Temperature: RT  
Injection: 10  $\mu\text{L}$   
Detection: UV 254 nm  
Instrument: 伍丰LC-100

组分	保留时间 (min)	理论塔板数 (USP)	拖尾因子 (USP)	分离度 (USP)
1	45.59	3614	1.21	/
2	63.99	3189	1.06	4.91
3	72.87	3740	1.13	1.93
4	81.03	4058	1.14	1.62