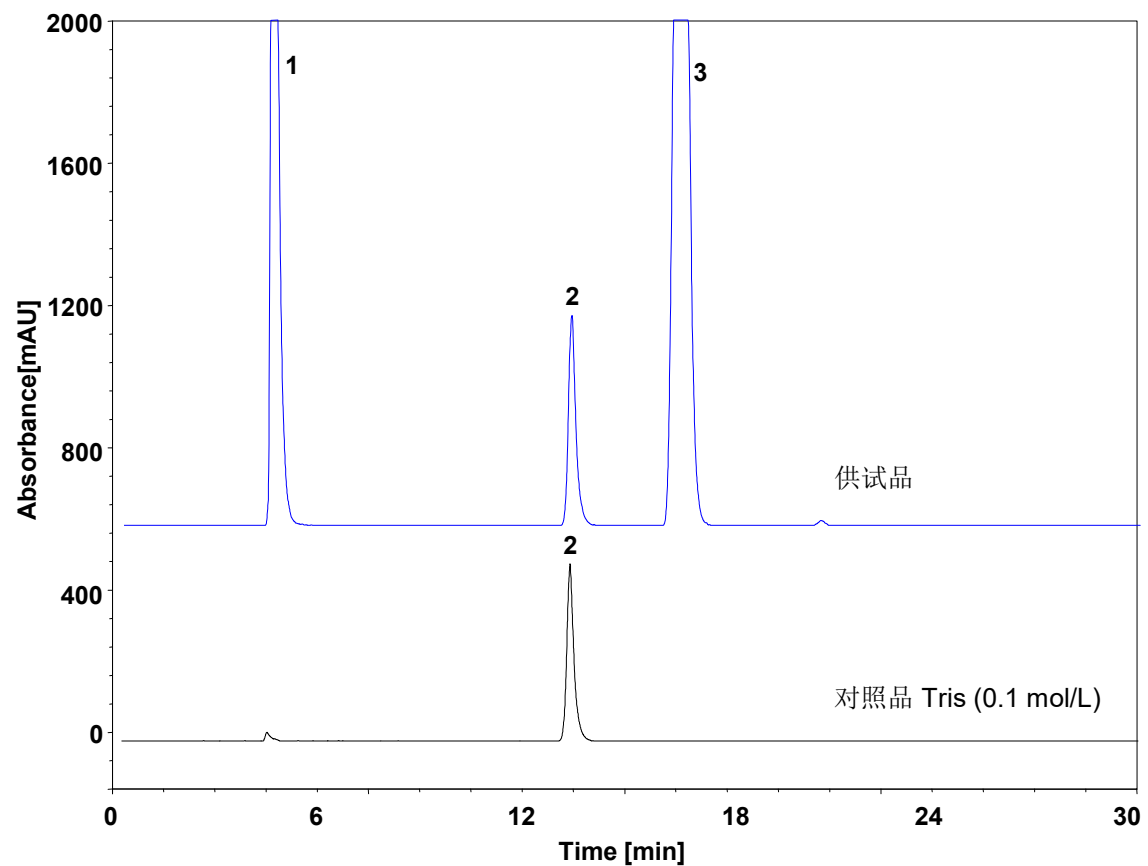


Tris



Column: ChromCore SCX, 5 μ m
Dimension: 4.6 \times 250 mm
Mobile Phase: 100 mM Ammonium acetate
Flow Rate: 0.6 mL/min
Temperature: 25 $^{\circ}$ C
Injection: 100 μ L
Detection: ELSD: Evap:65 $^{\circ}$ C, Neb:55 $^{\circ}$ C, Gas:1.5 SLM
Instrument: Agilent 1260
Sample: Tris
Peaks:
1. Cl⁻
2. Tris⁺
3. Na⁺