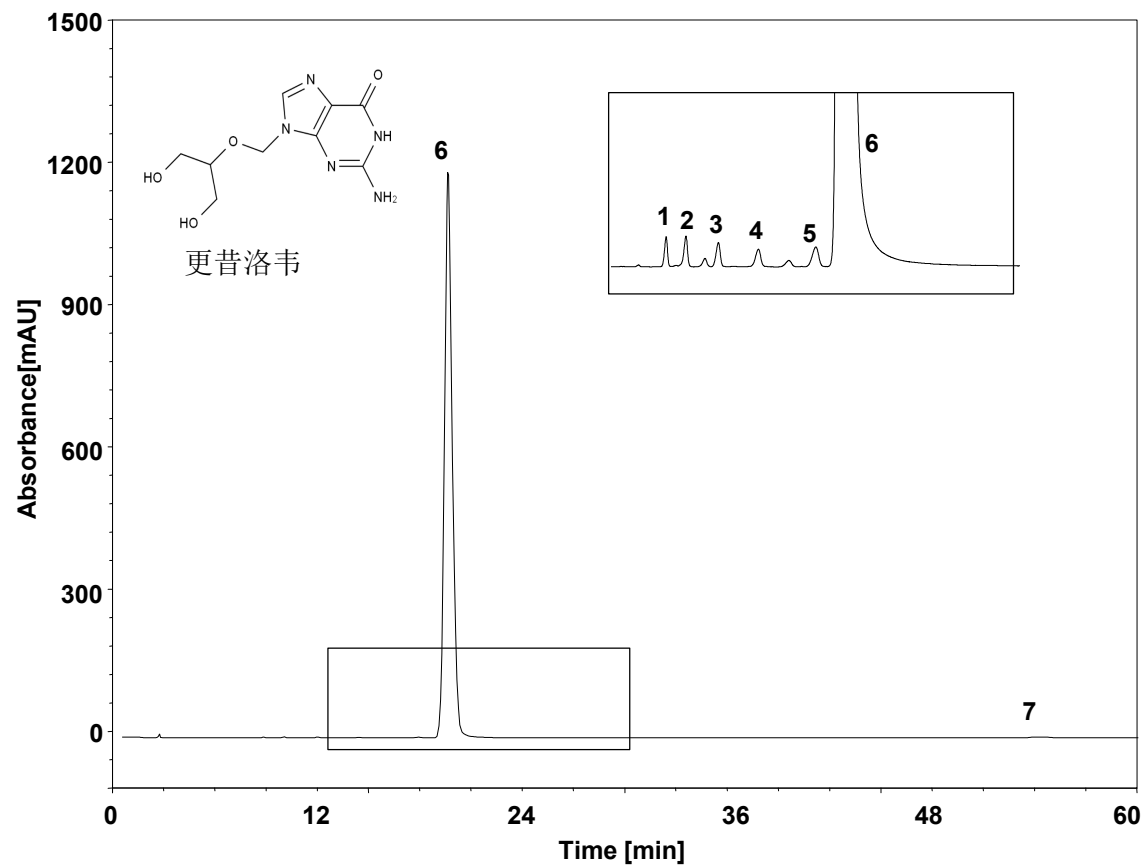


# 更昔洛韦



Column: ChromCore 300 SCX, 5  $\mu$ m  
Dimension: 4.6  $\times$  250 mm  
Mobile Phase: 50/50 v/v 乙腈/0.05% 三氟乙酸水  
Flow Rate: 1.5 mL/min  
Temperature: 40  $^{\circ}$ C  
Injection: 20  $\mu$ L  
Detection: UV 254 nm  
Instrument: 岛津 LC-2030C  
Sample: 更昔洛韦  
Peaks: 1~5. 杂质  
6. 更昔洛韦  
7. 杂质