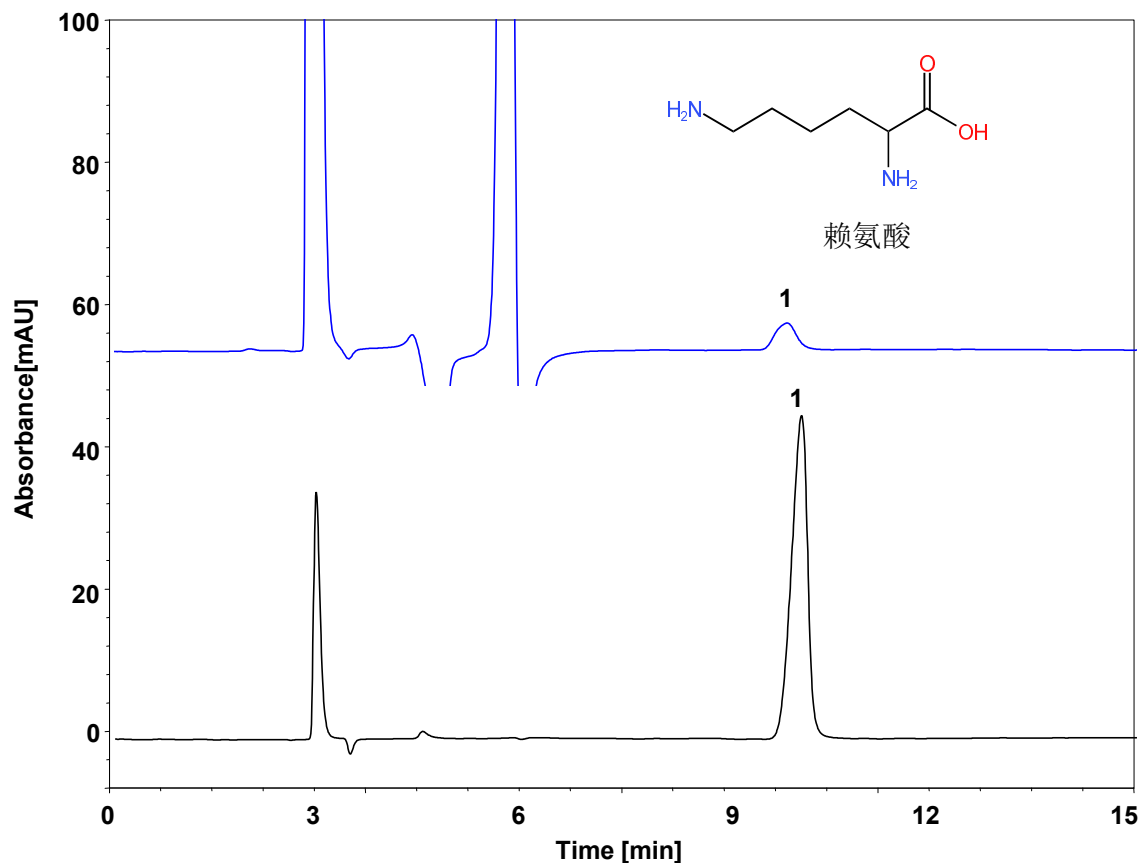


蛋白中赖氨酸



Column: ChromCore HILIC-Amide, 5 μ m
Dimension: 4.6 \times 250 mm
Mobile Phase: 70/30 v/v 乙腈/100 mM醋酸铵溶液, pH5.2
Flow Rate: 1.0 mL/min
Temperature: 30 $^{\circ}$ C
Injection: 5 μ L
Detection: RID 30 $^{\circ}$ C
Instrument: 岛津LC-2030C
Sample: 蛋白
Peak: 1. 赖氨酸