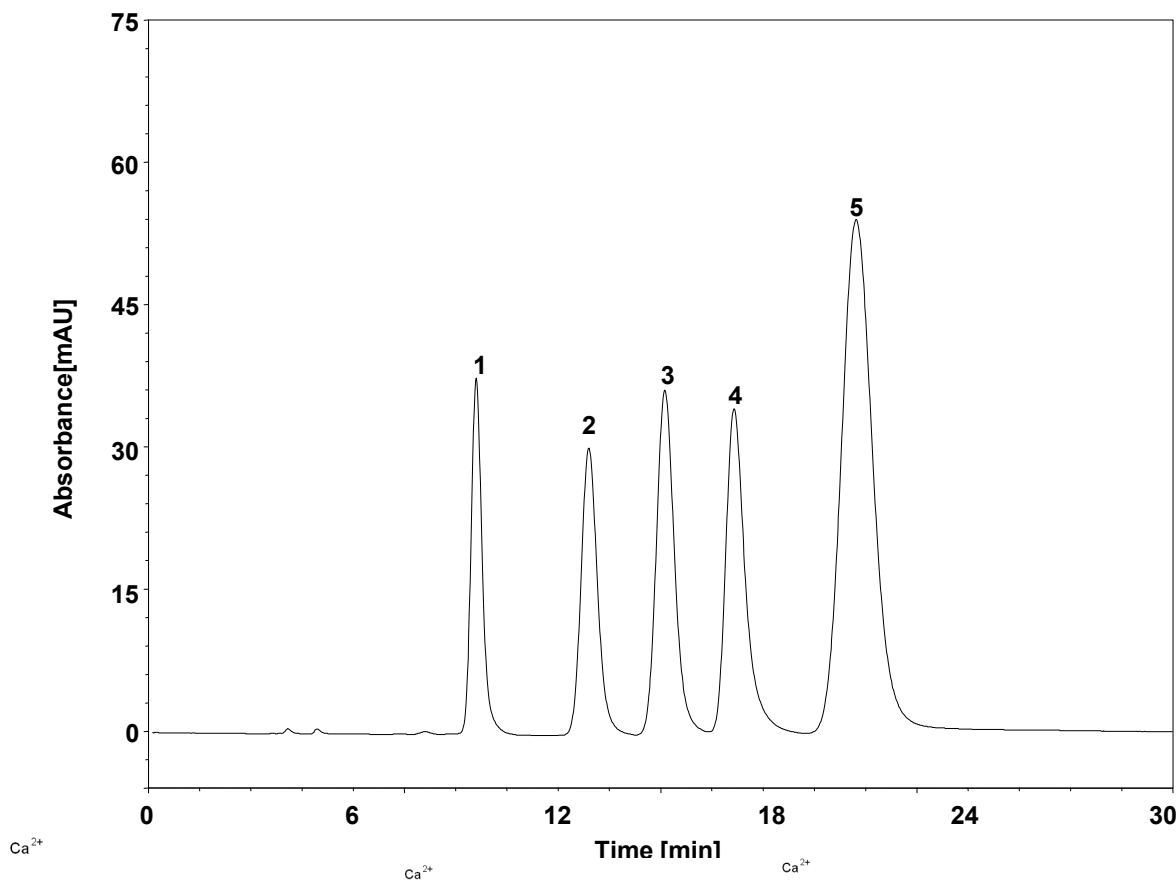
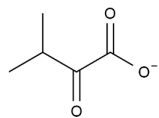


# 酮氨酸钙

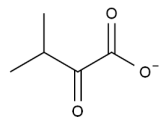


Column: ChromCore Sugar-10H, 6  $\mu$ m  
 Dimension: 7.8  $\times$  300 mm  
 Mobile Phase: 12.5 mM 硫酸水  
 Flow Rate: 0.5 mL/min  
 Temperature: 40  $^{\circ}$ C  
 Injection: 10  $\mu$ L  
 Detection: UV 205 nm  
 Instrument: 岛津LC-2030C  
 Sample: 酮氨酸钙混标  
 Peaks: 1. 酮缬氨酸钙      2. 酮异亮氨酸钙  
           3. 酮亮氨酸钙      4. 羟蛋氨酸钙  
           5. 酮苯丙氨酸钙

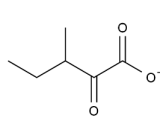
组分	保留时间 (min)	理论塔板数 (USP)	拖尾因子 (USP)	分离度 (USP)
酮缬氨酸钙	12.632	11481	1.22	/
酮异亮氨酸钙	15.694	7474	1.18	4.47
酮亮氨酸钙	17.558	7647	1.16	2.39
羟蛋氨酸钙	19.257	8605	1.37	2.03
酮苯丙氨酸钙	22.250	4124	1.12	2.64



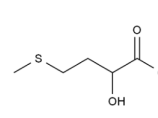
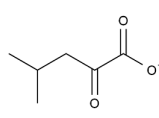
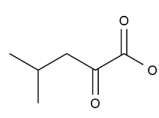
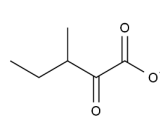
酮缬氨酸钙



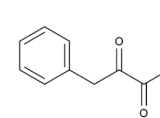
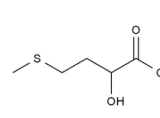
酮异亮氨酸钙



酮亮氨酸钙



羟基蛋氨酸钙



酮苯丙氨酸钙

